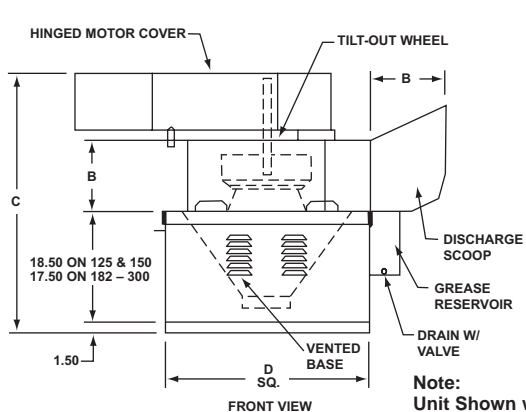
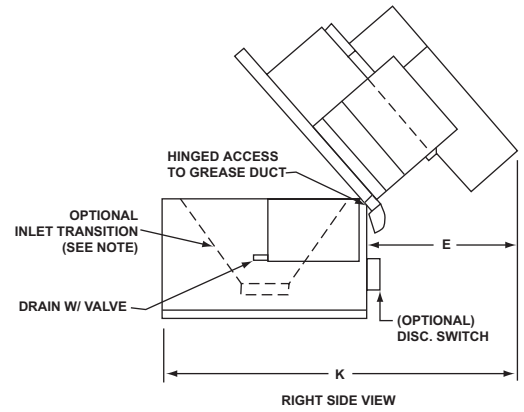


# GBC Series Exhaust Blower

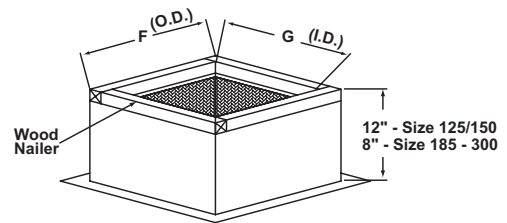
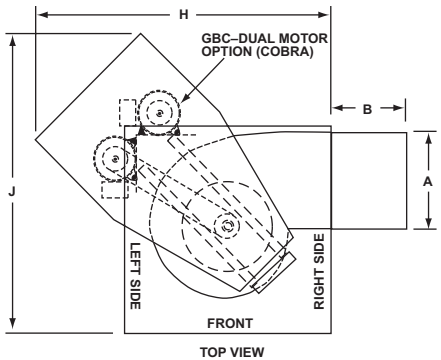
## Dual Motor Option



**Note:**  
Unit Shown with  
Access Lid Closed.



**Note:**  
Unit Shown with  
Access Lid Open.



**ROOF CURB DETAIL**  
(optional) All - Welded  
Galvanized Steel

| SIZE | A     | B     | C     | D     | E   | F     | G     | H~  | J   | K~  | FAN WEIGHT* | SHIP WEIGHT* | CURB WEIGHT* |
|------|-------|-------|-------|-------|-----|-------|-------|-----|-----|-----|-------------|--------------|--------------|
| 125  | 16.13 | 12.00 | 44.50 | 34.00 | C/F | 33.50 | 30.50 | C/F | C/F | C/F | 250         | 400          | 40           |
| 150  | 16.13 | 12.00 | 44.50 | 34.00 | C/F | 33.50 | 30.50 | C/F | C/F | C/F | 250         | 412          | 40           |
| 182  | 19.50 | 14.63 | 46.00 | 40.50 | C/F | 39.75 | 36.75 | C/F | C/F | C/F | 350         | 537          | 34           |
| 222  | 23.75 | 17.75 | 49.50 | 40.50 | C/F | 39.75 | 36.75 | C/F | C/F | C/F | 420         | 625          | 34           |
| 245  | 26.25 | 19.63 | 52.00 | 47.00 | C/F | 46.50 | 43.50 | C/F | C/F | C/F | 420         | 816          | 37           |
| 270  | 29.00 | 21.63 | 53.00 | 53.00 | C/F | 52.50 | 49.50 | C/F | C/F | C/F | 620         | 964          | 45           |
| 300  | 32.25 | 23.75 | 55.00 | 65.50 | C/F | 64.50 | 51.50 | C/F | C/F | C/F | 720         | 1152         | 55           |

~ Maximum Clearance Dimensions For Installation      \* Approximate Weights      C/F - Contact Factory  
 Note: Inlet transition must be supplied by others if not ordered from the factory in order for the fan to operate properly.

### SPECIFICATIONS

| Tag # | Qty | Fan   |     |      |     |     | Motor |                 | Special Notes |
|-------|-----|-------|-----|------|-----|-----|-------|-----------------|---------------|
|       |     | Model | CFM | S.P. | BHP | RPM | H.P.  | Voltage / Phase |               |
|       |     |       |     |      |     |     |       |                 |               |
|       |     |       |     |      |     |     |       |                 |               |
|       |     |       |     |      |     |     |       |                 |               |

|                     |                                       |
|---------------------|---------------------------------------|
| <b>Project Name</b> | <b>Contractor</b>                     |
| <b>Location</b>     | <b>Submitted By</b>                   |
| <b>Architect</b>    | <b>Submittal Date</b>                 |
| <b>Engineer</b>     | <b>Customer Purchase Order Number</b> |

**Features**

- AMCA Licensed
- Liquid-tight, heavy gauge housing
- Continuously welded bases
- Hinged lift-out wheel
- Leak free discharge scoop
- Large quantity grease reservoir
- Heavy duty bearings
- Efficient, continuous-duty motor
- Non-overloading, backwardly-inclined fan wheel
- UL762 (YZHW), for use with grease-laden air

DRAWING NO: **GBC-6001**      Date: **02/06**