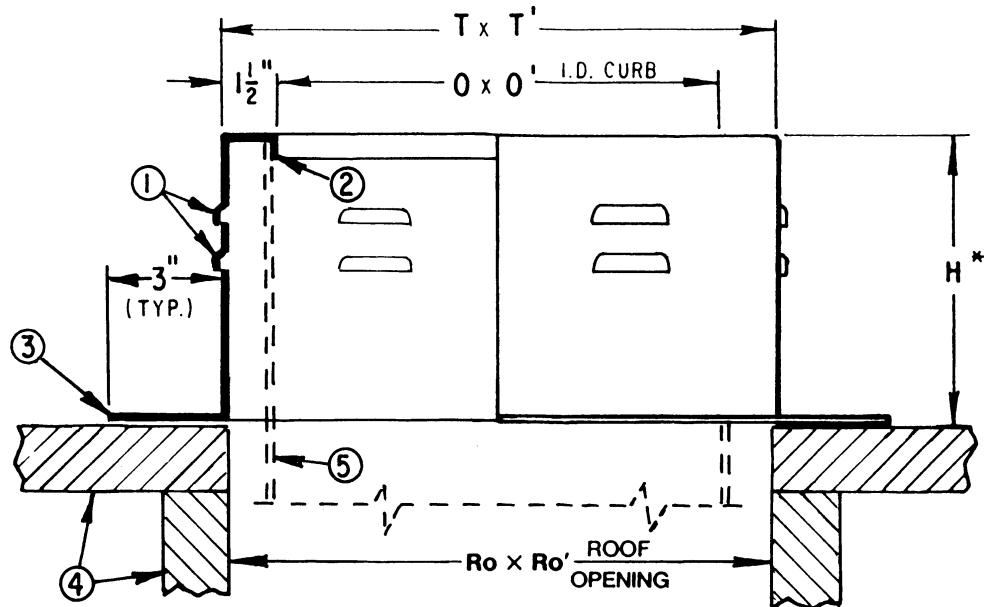


Unibeam Curb Vented



Legend

1. Stamped Air Intake Louvers (4 Sides)
2. Duct Fastening Flange
3. Curb Fastening Flange
4. Roof Structure - By Others
5. Exhaust Duct - By Others

Note: *Standard height 18"

Material: Fully welded 18 gauge galvanized steel (except where 'Aluminum' is indicated on curb schedule)



PENNBARRY™

1401 North Plano Road, Richardson, TX 75081

Ph: 972.234.3202 Fax: 972.497.0468

www.PennBarry.com

Submittal Sheet Unibeam Curb - Vented Prefabricated Steel (Self Flashable) Roof Curb)

This drawing illustrates our understanding of order requirements. When approved, it represents details for fabrication, as such, PennBarry will not be responsible for revisions in the field or other changes after release for fabrication. Published and protected by PennBarry, Richardson, TX. All rights reserved. May not be reproduced partially or in full without permission from the publisher. No rights conveyed to manufacture partially or in full, use or sell either the method of construction represented or any invention in any way related thereto.

Form ES-UV
Revised March 2005