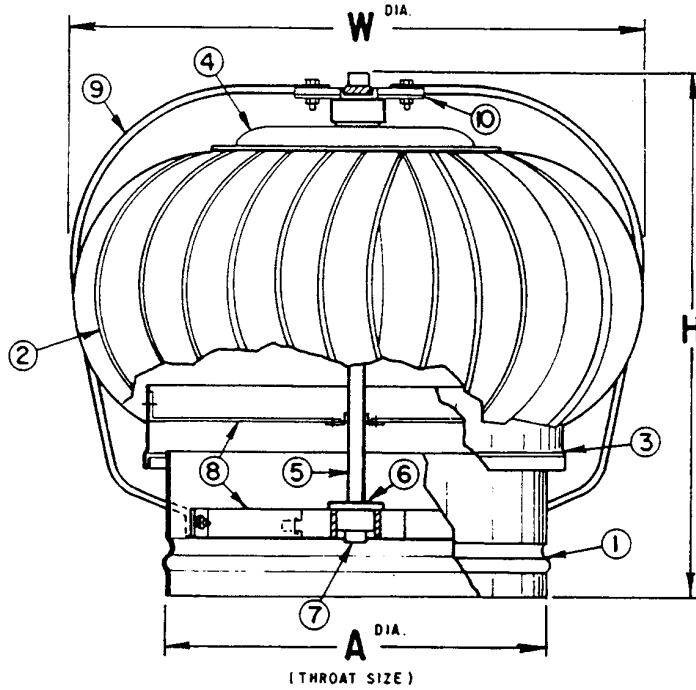


# Turbine Ventilator




## Legend

- |  |  |
|--|--|
| 1. Swaged and Reinforced Airshaft      | 6. Prelubricated Ball Bearing Assembly |
| 2. Roll Formed Ridgidized Rotor Blades | 7. Lubricant Reservoir and Cover       |
| 3. Rolled and Welded Rotor Collar      | 8. Internal Support Braces             |
| 4. Seamless Rotor Crown Plate          | 9. Exterior Heavy Duty Support Braces  |
| 5. Machined Rotor Shaft                | 10. Die Cast Brace, Bearing Plate      |

## Dimensional Data

	4	5	6	7	8	9	10	12	14	15	16	18	20	24
<b>A</b> <sup>DIA.</sup> Throat Size	4	5	6	7	8	9	10	12	14	15	16	18	20	24
<b>W</b> <sup>DIA.</sup> Width	10 1/4	12 3/4	12 3/4	14 1/4	14 1/4	16 1/2	16 1/4	19	22 3/4	25	25 1/2	29	31 5/8	35 3/4
<b>H</b> Height	12	14 1/4	14 1/2	15	15	16 1/4	16 1/4	17	19 3/4	21	21 3/4	24	25 1/4	28 1/4
<b>NO. OF BRACES</b> (EXTERIOR)	3 <sup>Alum.</sup>	3 <sup>Alum.</sup>	3 <sup>Alum.</sup>	3 <sup>Alum.</sup>	3 <sup>Alum.</sup>	3 <sup>Alum.</sup>	3 <sup>Alum.</sup>	3 <sup>Alum.</sup>	3 <sup>Alum.</sup>	3 <sup>Steel</sup>	3 <sup>Steel</sup>	4 <sup>Steel</sup>	4 <sup>Steel</sup>	4 <sup>Steel</sup>

**Material:** Galvanized Steel (except where "Alum." is indicated on Vent Schedule)

 <p style="text-align: center;"><b>PENNBARRY™</b></p> <p>1401 North Plano Road, Richardson, TX 75081 Ph: 972.234.3202 Fax: 972.497.0468 <a href="http://www.PennBarry.com">www.PennBarry.com</a></p>	<h2 style="margin: 0;">Submittal Sheet</h2> <h3 style="margin: 0;">Turbine Ventilator</h3> <h4 style="margin: 0;">Sizes 4 through 24</h4>
---	---

This drawing illustrates our understanding of order requirements. When approved, it represents details for fabrication, as such, PennBarry will not be responsible for revisions in the field or other changes after release for fabrication. Published and protected by PennBarry, Richardson, TX. All rights reserved. May not be reproduced partially or in full without permission from the publisher. No rights conveyed to manufacture partially or in full, use or sell either the method of construction represented or any invention in any way related thereto.