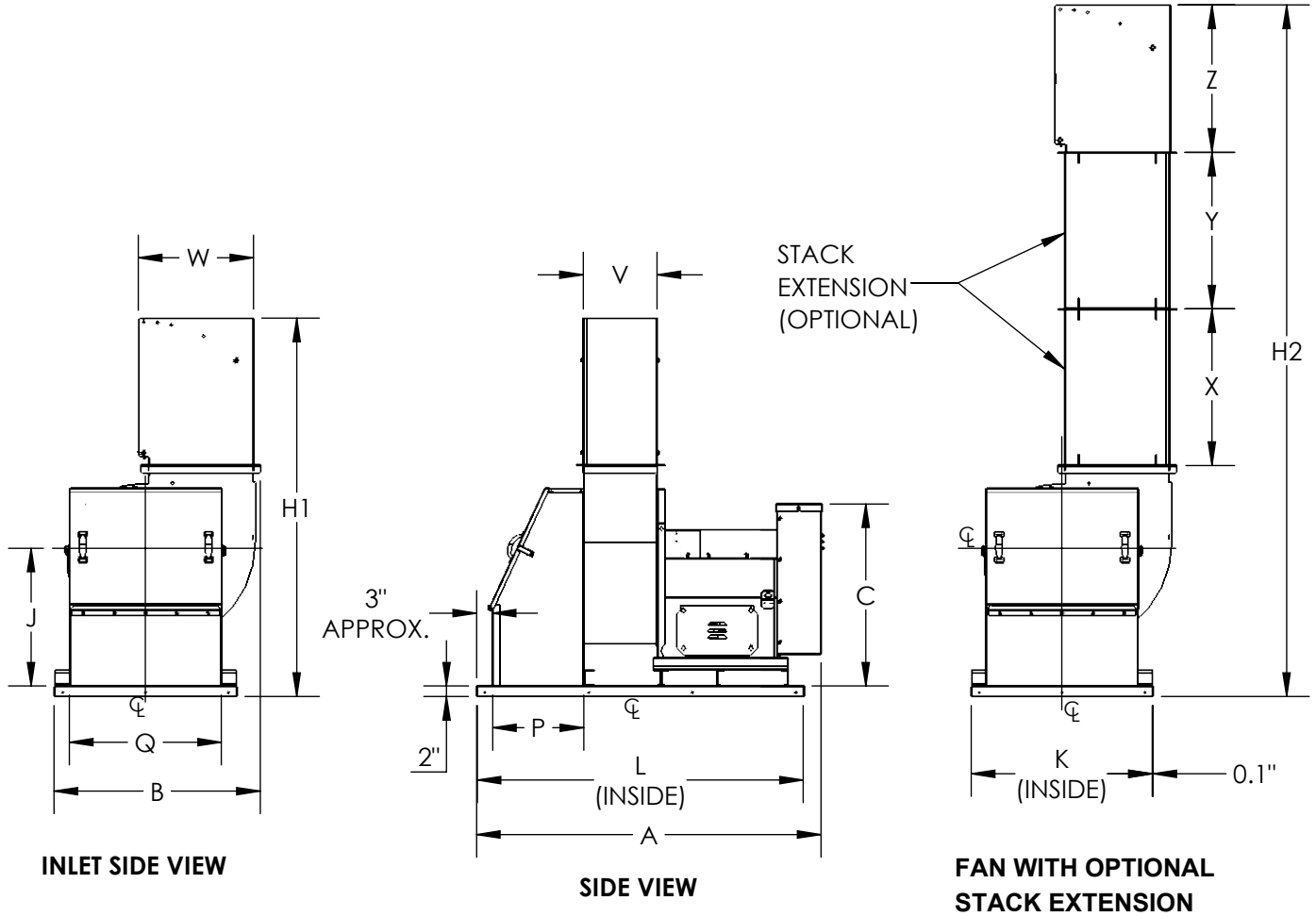




DATE: TAG:
 JOB:
 PROJECT:
 COMPANY:
 SALES PERSON:

vcPLUME-L, CLASS-2, ARRANGEMENT-10, INLET BOX AND CURB CAP,
 HIGH VELOCITY NOZZLE, SIZES 122-270



DIMENSIONAL DATA

Size	A	B	C	J	K	L	P	Q	H1	H2	V	W	X	Y	Z	MAX. WT. (lbs)	MAX RPM	MAX. MTR
122	51.31	28.03	29.38	21.00	25.00	45.00	13.00	19.38	49.56	125.56	10.06	15.25	38.00	38.00	18.06	526	4650	184T
135	52.34	30.98	30.84	21.38	28.00	46.00	13.00	22.37	53.50	126.38	11.06	16.62	36.44	36.44	20.88	567	4300	215T
150	53.53	33.70	32.63	23.00	30.00	47.00	13.00	24.37	56.19	126.56	12.25	18.06	35.19	35.19	21.52	619	3850	215T
165	62.34	36.85	35.13	24.63	33.00	56.00	16.00	27.37	59.63	126.81	13.50	19.75	33.62	33.62	22.48	742	3500	256T
182	66.66	39.84	38.13	26.63	35.00	58.00	17.50	29.37	68.13	128.56	14.25	22.25	30.25	30.25	28.46	820	3000	256T
200	70.97	43.57	41.44	28.75	38.00	63.00	20.50	32.37	73.25	129.13	15.62	24.25	27.94	27.94	30.21	947	2750	256T
222	74.22	48.15	45.00	31.25	42.00	66.00	22.00	36.37	81.13	130.25	17.31	26.75	24.56	24.56	34.14	1066	2450	256T
245	81.84	52.17	48.50	33.75	45.00	70.00	24.00	39.37	88.31	131.31	23.00	30.93	21.50	-	37.41	1150	2200	286T
270	83.96	56.51	52.63	36.75	48.00	72.00	22.50	42.37	96.94	132.38	24.81	33.68	35.44	-	40.91	1360	2000	324T

ALL DIMENSIONS ARE IN INCHES, WEIGHTS ARE APPROXIMATE AND DOES NOT INCLUDE DRIVES.

REVISION: FORM: REPLACES: