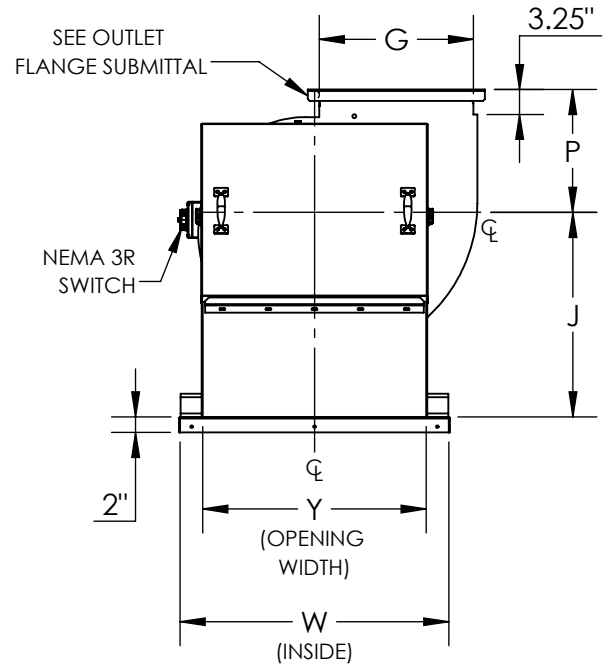
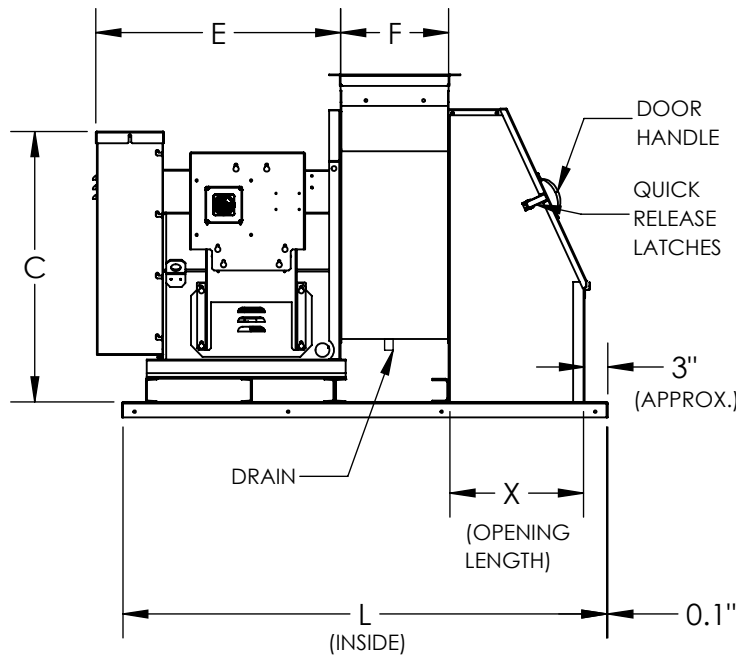




DATE: TAG:
 JOB:
 PROJECT:
 COMPANY:
 SALES PERSON:

UVS2, CLASS 2, ARRANGEMENT-10
 INLET BOX AND CURB CAP FOR UL RESTAURANT GREASE EXHAUST (500F)



INLET VIEW

STANDARD FEATURES:

1. Discharge: UB
2. Rotation: CW/CCW (CW shown above)
3. Steel wheel
4. Welded and Coated Housing and Pedestal
5. Welded and Coated Inlet Box and Curb Cap
6. 1045 TG&P Shaft
7. 80K L10 Life Bearings
8. Adjustable Motor Base Assembly
9. Access Door – (Bolted or Hinged)
10. Housing Drain & Plug - 3/4" NPT
11. Pre-Wired Switch NEMA 3R
12. Weather Cover

13. High temperature paint
14. Shaft Seal (Ceramic)
15. Flanged Outlet
16. Heat Slinger

OPTIONAL ACCESSORIES:

1. Speed Controllers (shipped loose only)
2. Grease Containment with optional Absorbent
3. Outlet Stack
4. Curb
5. Extended Lube Lines

DIMENSIONAL DATA

Size	C	E	F	G	J	L	P	W	X	Y	MAX. WT. (lbs)	MAX RPM	MAX. MTR
122	27.94	25.25	9.88	13.06	21.00	50.00	13.50	25.00	13.00	19.00	376	4650	184T
135	28.31	25.25	10.88	14.38	21.38	51.00	14.25	28.00	13.00	22.00	403	4300	215T
150	29.94	25.25	12.06	15.88	23.00	52.00	14.75	30.00	13.00	24.00	442	3850	215T
165	31.56	29.88	13.25	17.56	24.63	61.00	15.50	33.00	16.00	27.00	551	3500	256T
182	35.19	31.88	14.06	20.06	26.63	63.00	16.00	35.00	17.50	29.00	610	3000	256T
200	37.31	31.87	15.38	22.00	28.75	68.00	17.25	38.00	20.50	32.00	719	2750	256T
222	39.81	31.87	17.13	24.50	31.25	71.00	18.75	42.00	22.00	36.00	820	2450	256T
245	43.94	35.38	18.75	27.00	33.75	78.00	20.25	45.00	24.00	39.00	947	2200	286T
270	46.94	37.62	20.63	29.75	36.75	80.00	22.25	48.00	22.50	42.00	1084	2000	324T

ALL DIMENSIONS ARE IN INCHES, WEIGHTS ARE APPROXIMATE AND DOES NOT INCLUDE DRIVES OR ACCESSORIES.

REVISION:	FORM:	REPLACES:
-----------	-------	-----------