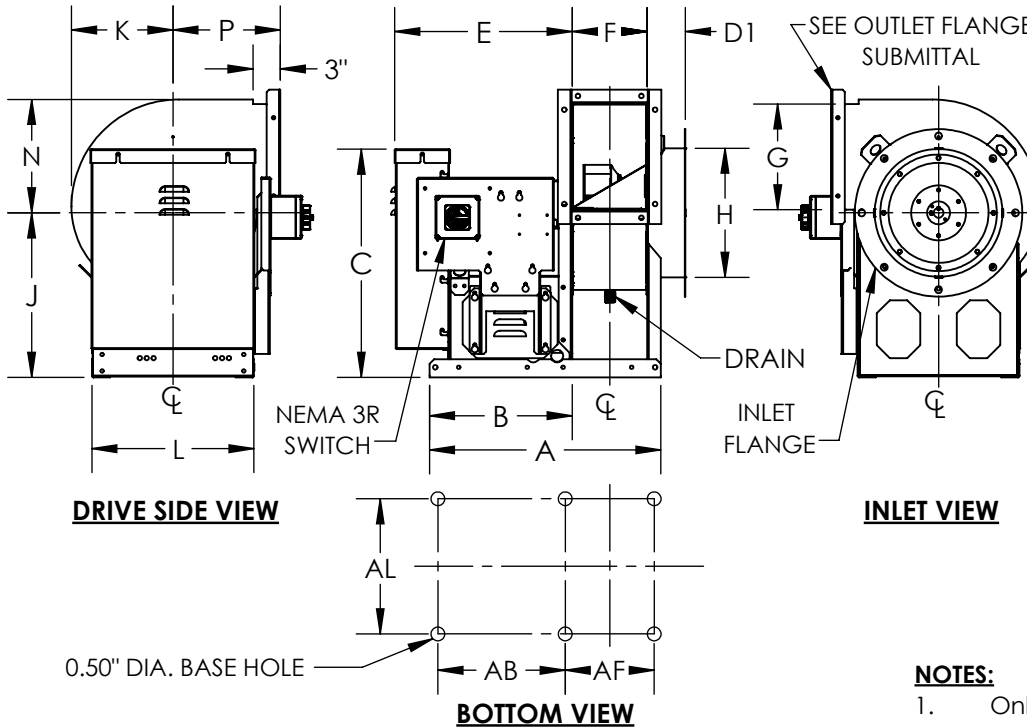




DATE: TAG:
 JOB:
 PROJECT:
 COMPANY:
 SALES PERSON:

UVS2, CLASS-1, ARRANGEMENT- 10
 UTILITY VENT SET FOR UL GREASE EXHAUST (500F), SIZES 60-270



STANDARD CONSTRUCTION:

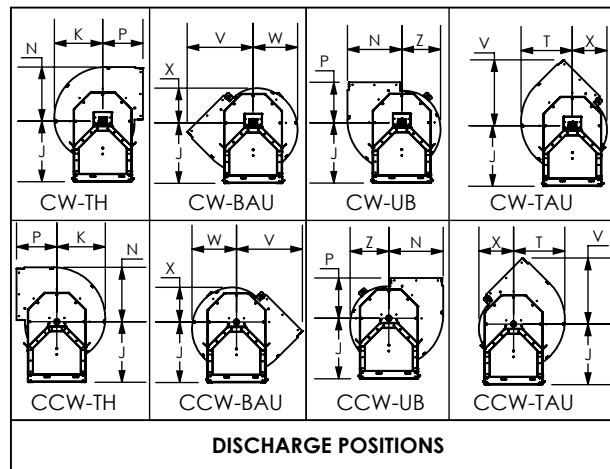
1. Steel Wheel
2. Welded and Coated Housing, Bolted and Galvanized Pedestal
3. Weather Cover
4. Pre-wired NEMA 3R Switch
5. Housing Drain 3/4" NPT
6. Access Door (Bolted or Hinged)
7. Flanged Inlet and Outlet
8. Shaft Seal (Ceramic)
9. Heat Slinger
10. High Temperature Paint

OPTIONAL ACCESSORIES:

1. Outlet Stack
2. Grease Containment with optional Absorbent
3. Extended Lube Lines

NOTES:

1. Only holes at corners are required for mounting



DIMENSIONAL DATA

| Size | A | B | C | D1 | E | F | G | H | J | K | L | N | P | T | V | W | X | Z | AL | AB | AF | MAX. WT.(lbs) | MAX. RPM | MAX. MTR. |
|------|-------|-------|-------|------|-------|-------|-------|-------|-------|-------|-------|-------|-------|-------|-------|-------|-------|-------|-------|-------|-------|---------------|----------|-----------|
| 60 | 25.31 | 15.63 | 24.94 | 4.25 | 19.44 | 8.19 | 11.56 | 14.13 | 18.00 | 11.06 | 17.75 | 12.44 | 12.00 | 11.75 | 16.75 | 10.19 | 8.00 | 8.94 | 15.25 | 14.13 | 9.69 | 134 | 4400 | 145T |
| 70 | 25.31 | 15.63 | 24.94 | 4.25 | 19.44 | 8.19 | 11.56 | 14.13 | 18.00 | 11.06 | 17.75 | 12.44 | 12.00 | 11.75 | 16.75 | 10.19 | 8.00 | 8.94 | 15.25 | 14.13 | 9.69 | 134 | 4400 | 145T |
| 80 | 25.31 | 15.63 | 24.94 | 4.25 | 19.44 | 8.19 | 11.56 | 14.13 | 18.00 | 11.06 | 17.75 | 12.44 | 12.00 | 11.75 | 16.75 | 10.19 | 8.00 | 8.94 | 15.25 | 14.13 | 9.69 | 134 | 4400 | 145T |
| 105 | 25.31 | 15.63 | 24.94 | 4.25 | 19.44 | 8.19 | 11.56 | 14.13 | 18.00 | 11.06 | 17.75 | 12.44 | 12.00 | 11.75 | 16.75 | 10.19 | 8.00 | 8.94 | 15.25 | 14.13 | 9.69 | 132 | 4400 | 145T |
| 122 | 29.00 | 17.63 | 24.94 | 4.25 | 21.44 | 9.88 | 13.06 | 16.75 | 18.00 | 12.88 | 19.25 | 14.38 | 13.50 | 13.63 | 19.19 | 11.81 | 9.25 | 10.31 | 16.75 | 16.00 | 11.44 | 158 | 3550 | 182T |
| 135 | 29.00 | 17.63 | 25.31 | 4.25 | 21.44 | 10.88 | 14.38 | 18.38 | 18.38 | 14.19 | 19.25 | 15.81 | 14.25 | 15.00 | 20.75 | 13.00 | 10.19 | 11.38 | 16.75 | 16.00 | 12.44 | 168 | 3222 | 182T |
| 150 | 31.19 | 17.63 | 26.94 | 4.25 | 22.44 | 12.06 | 15.88 | 20.38 | 20.00 | 15.69 | 19.25 | 17.56 | 14.75 | 16.63 | 22.31 | 14.38 | 11.25 | 12.56 | 16.75 | 16.00 | 13.63 | 189 | 2900 | 184T |
| 165 | 32.38 | 17.63 | 28.56 | 4.25 | 22.44 | 13.25 | 17.56 | 22.38 | 21.63 | 17.19 | 21.75 | 19.25 | 14.75 | 18.19 | 24.06 | 15.75 | 12.31 | 13.75 | 19.25 | 16.00 | 14.81 | 217 | 2636 | 184T |
| 182 | 35.56 | 20.00 | 32.19 | 4.25 | 26.06 | 14.06 | 20.06 | 23.13 | 23.63 | 18.94 | 22.75 | 21.19 | 15.00 | 20.06 | 25.75 | 17.31 | 13.56 | 15.13 | 20.25 | 18.50 | 15.69 | 264 | 2300 | 215T |
| 200 | 36.88 | 20.00 | 34.31 | 4.25 | 26.06 | 15.38 | 22.00 | 25.25 | 25.75 | 20.69 | 25.25 | 23.19 | 16.25 | 21.94 | 28.06 | 18.94 | 14.81 | 16.56 | 22.75 | 18.50 | 16.94 | 333 | 2100 | 215T |
| 222 | 38.63 | 20.00 | 36.81 | 4.25 | 26.06 | 17.13 | 24.50 | 28.00 | 28.25 | 23.00 | 27.25 | 25.75 | 18.00 | 24.38 | 30.94 | 21.06 | 16.44 | 18.38 | 24.75 | 18.50 | 18.75 | 405 | 1888 | 215T |
| 245 | 45.75 | 25.50 | 40.94 | 4.25 | 31.56 | 18.75 | 27.00 | 30.88 | 30.75 | 25.25 | 29.25 | 28.25 | 19.75 | 26.75 | 33.81 | 23.13 | 18.00 | 20.13 | 26.75 | 23.50 | 20.25 | 502 | 1714 | 215T |
| 270 | 47.63 | 25.50 | 43.94 | 4.25 | 31.56 | 20.63 | 29.75 | 33.88 | 33.75 | 27.75 | 32.75 | 31.13 | 21.75 | 29.44 | 37.19 | 25.44 | 19.81 | 22.19 | 30.25 | 23.50 | 22.13 | 579 | 1556 | 254T |

ALL DIMENSIONS ARE IN INCHES, WEIGHTS ARE APPROXIMATE AND DOES NOT INCLUDE DRIVES OR ACCESSORIES.

REVISION:

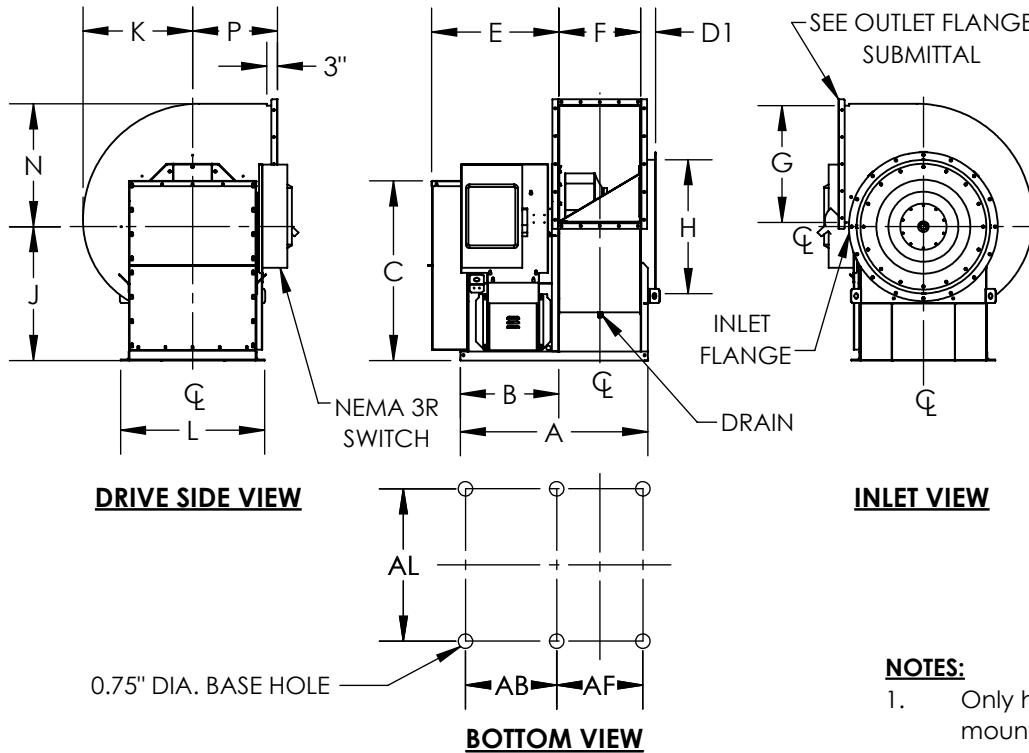
FORM:

REPLACES:



DATE: TAG:
 JOB:
 PROJECT:
 COMPANY:
 SALES PERSON:

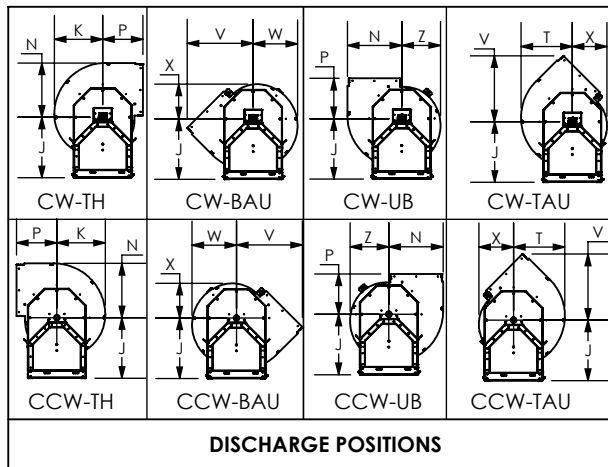
UVS2, CLASS-1, ARRANGEMENT-10
 UTILITY VENT SET FOR UL GREASE EXHAUST (500F), SIZES 300-542



- STANDARD CONSTRUCTION:**
1. Steel Wheel
 2. Welded and Coated Housing, Bolted and Galvanized Pedestal
 3. Weather Cover
 4. Pre-wired NEMA 3R Switch
 5. Housing Drain 3/4" NPT
 6. Access Door (Bolted or Hinged)
 7. Flanged Inlet and Outlet
 8. Shaft Seal (Ceramic)
 9. Heat Slinger
 10. High Temperature Paint

- OPTIONAL ACCESSORIES:**
1. Outlet Stack
 2. Grease Containment with optional Absorbent
 3. Extended Lube Lines

- NOTES:**
1. Only holes at corners are required for mounting



DIMENSIONAL DATA

| Size | A | B | C | D1 | E | F | G | H | J | K | L | N | P | T | V | W | X | Z | AL | AB | AF | MAX. WT. (lbs) | MAX. RPM | MAX. MTR. |
|------|-------|-------|-------|------|-------|-------|-------|-------|-------|-------|-------|-------|-------|-------|-------|-------|-------|-------|-------|-------|-------|----------------|----------|-----------|
| 300 | 52.75 | 27.75 | 50.50 | 4.25 | 35.81 | 23.00 | 32.88 | 37.69 | 37.63 | 30.81 | 40.50 | 34.56 | 24.13 | 32.69 | 40.94 | 28.25 | 21.94 | 24.63 | 38.50 | 25.75 | 24.00 | 890 | 1400 | 256T |
| 330 | 55.00 | 27.75 | 53.88 | 4.25 | 35.81 | 25.25 | 36.19 | 41.44 | 41.00 | 33.81 | 44.00 | 37.94 | 26.50 | 35.88 | 45.00 | 30.94 | 24.13 | 27.00 | 42.00 | 25.75 | 26.25 | 1031 | 1273 | 284T |
| 365 | 60.63 | 30.75 | 60.69 | 4.25 | 38.81 | 27.88 | 40.06 | 45.81 | 45.00 | 37.31 | 47.50 | 41.94 | 29.25 | 39.63 | 49.75 | 34.19 | 26.63 | 29.81 | 45.50 | 28.75 | 28.88 | 1216 | 1151 | 286T |
| 402 | 63.50 | 30.75 | 64.94 | 4.25 | 38.81 | 30.75 | 44.13 | 50.50 | 49.25 | 41.13 | 51.00 | 46.13 | 32.25 | 43.63 | 54.94 | 37.63 | 29.25 | 32.75 | 49.00 | 28.75 | 31.75 | 1505 | 1044 | 324T |
| 445 | 70.38 | 33.38 | 74.31 | 5.25 | 42.06 | 34.00 | 48.75 | 55.88 | 54.25 | 45.44 | 55.50 | 51.00 | 35.75 | 48.25 | 60.81 | 41.63 | 32.38 | 36.25 | 53.50 | 30.38 | 37.00 | 1926 | 944 | 324T |
| 490 | 73.88 | 33.38 | 79.31 | 5.25 | 42.06 | 37.50 | 53.50 | 61.50 | 59.25 | 49.94 | 60.00 | 56.06 | 39.25 | 53.00 | 66.88 | 45.69 | 35.50 | 39.81 | 58.00 | 30.38 | 40.50 | 2233 | 857 | 326T |
| 542 | 77.88 | 33.38 | 85.31 | 5.25 | 42.06 | 41.50 | 59.19 | 68.13 | 65.25 | 55.31 | 66.50 | 62.06 | 43.25 | 58.69 | 73.94 | 50.63 | 39.31 | 44.69 | 64.50 | 30.38 | 44.50 | 2790 | 774 | 364T |

ALL DIMENSIONS ARE IN INCHES, WEIGHTS ARE APPROXIMATE AND DOES NOT INCLUDE DRIVES OR ACCESSORIES.

REVISION:

FORM:

REPLACES: