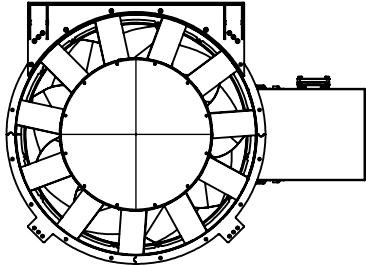
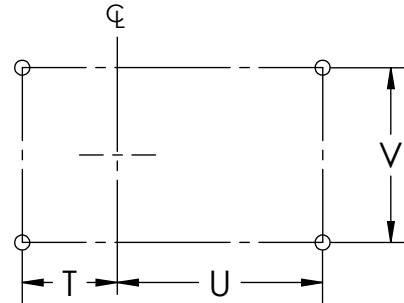


**MXI-ARRANGEMENT-9, LEVEL 2,
 HORIZONTAL, MOUNTING RAIL**

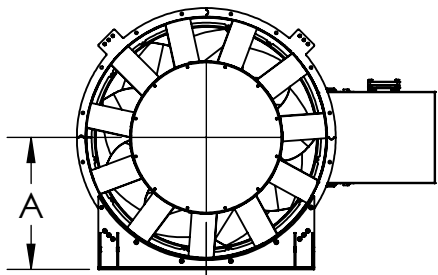


HORIZONTAL CEILING HUNG

ALL VIEWS ARE FROM DISCHARGE END
 WITH "C" MOTOR POSITION



FOUNDATION PLAN VIEW



HORIZONTAL BASE MOUNT

- MOUNTING RAILS ARE NEEDED WHEN FAN WILL BE MOUNTED HORIZONTALLY WITH USE OF ISOLATORS AND AT MOTOR POSITIONS "C" AND "G"
- "G" POSITION OF MOTOR WILL BE EXACTLY OPPOSITE TO "C"
- MOUNTING RAILS TO BE SHIPPED LOOSE WITH HARDWARE
- ISOLATORS ARE SUPPLIED AS PER ORDER

DIMENSIONAL DATA

Size	A	T	U	V	Mounting Rail Section	MXI FAN WEIGHT (LESS MOTOR) (LBS)	MXI-AF FAN WEIGHT (LESS MOTOR) (LBS)
122	12 11/16	10 7/8	29 1/2	25 1/4	C3 x 4.1	236	237
135	14	11 9/16	30 7/16	27 15/16	C3 x 4.1	271	270
150	14 3/4	12 5/16	32 15/16	31 1/16	C3 x 4.1	320	324
165	15 5/16	12 7/8	34.5	34 1/8	C3 x 4.1	358	363
182	16 3/16	13 3/4	38 7/8	37 5/8	C4 x 5.4	468	473
200	17 1/16	14 5/8	40	41 5/16	C4 x 5.4	546	550
222	19 5/8	17 1/16	41 9/16	45 7/8	C5 x 6.7	673	666
245	20 7/8	18 3/16	46 1/4	52 1/16	C6x 8.2	796	792
270	22 1/8	19 7/16	48	57 1/4	C6x 10.5	936	945
300	24 3/4	21 5/16	48 9/16	63 7/16	C6x 10.5	1154	1144
330	26 1/4	22 13/16	52 3/16	69 5/8	C8x11.5	1343	1355
365	29	24 9/16	58 3/8	77 1/16	C8x11.5	1878	1875
402	31 7/8	27 7/16	61 9/16	84 11/16	C10x15.3	2260	2218
445	34 5/16	29 7/8	67 11/16	93 1/2	C12x30	2732	2678
490	38 1/2	32 5/8	71 5/16	104 1/4	C12x30	3175	-
542	41 7/16	35 9/16	76 1/8	115	C12x30	3753	-
600	46 1/2	38 5/8	81 15/16	126 15/16	C12x30	4480	-

ALL DIMENSIONS ARE IN INCHES