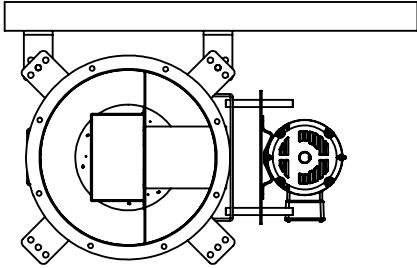
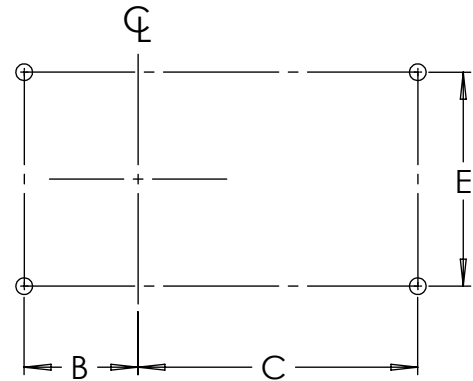
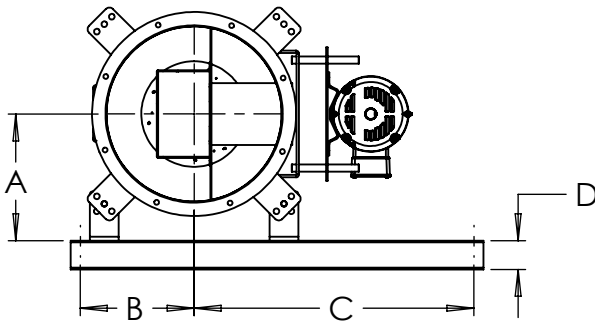


TCI-ARRANGEMENT 9- MOUNTING RAILS CUSTOMER SUBMITTAL

HORIZONTAL CEILING MOUNT



(ALL VIEWS ARE FROM DISCHARGE END
WITH MOTOR AT "C" POSITION)



HORIZONTAL BASE MOUNT

FOUNDATION PLAN VIEW

MOTOR AT G POSITION WILL BE OPPOSITE

MOUNTING RAILS TO BE SHIPPED LOOSE WITH HARDWARE. ISOLATORS ARE PER ORDER

MOUNTING RAILS ARE NEEDED WHEN ISOLATORS ARE USED FOR HORIZONTAL ORIENTATION WITH MOTOR AT C OR G

DIMENSIONAL DATA

SIZE	A	B	C	D	E	MAX MTR FRAME SIZE	LESS MOTOR/DRIVE WEIGHT
90	13.19	11.85	29.15	3.00	22.29	184T	160
105	13.19	11.85	29.15	3.00	22.29	184T	160
122	13.19	11.85	29.15	3.00	22.29	184T	160
135	13.86	12.56	32.44	4.00	24.29	215T	200
150	14.38	13.29	32.71	4.00	26.29	215T	225
165	16.16	14.29	32.71	4.00	26.29	215T	235
182	18.40	16.19	34.81	4.00	28.29	215T	275

REVISION:

FORM:

REPLACES: