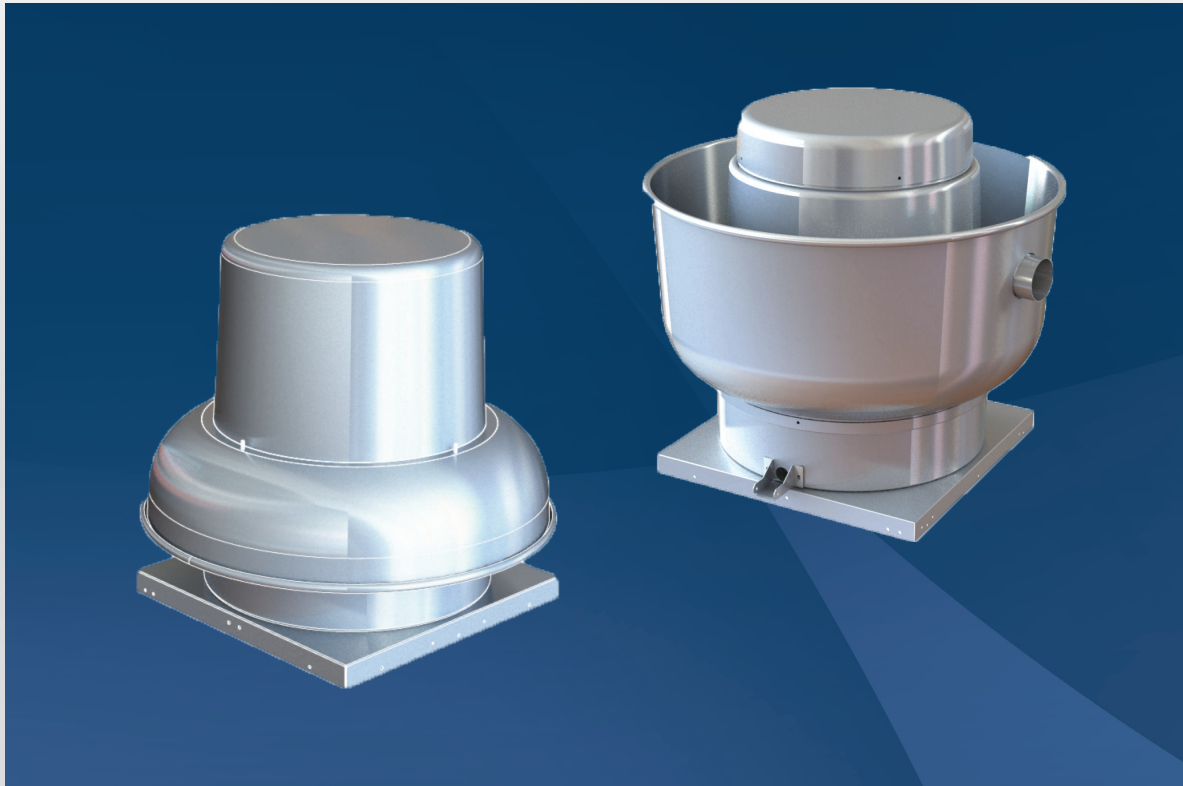


Domex & Fumex

Direct Drive Series



DIRECT DRIVE EXPANSION TO PRODUCT LINES

DOMEX & FUMEX

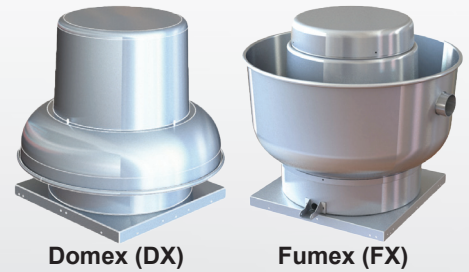
- **High performance**
 - **G**plus EC motors provide greater efficiency, flexibility, and controllability
 - Patented, backward inclined, centrifugal wheel delivers high efficiency
- **Selection**
 - Wide range of fan speeds, CFM's, and static pressures
 - Selection of motors starting from 1/6 HP to 3/4 HP
- **Controllability**
 - Fine-tune motor to exact operating range
 - Ability to connect to building management system



DOMEX (DX), FUMEX (FX)

Direct drive downblast Domex (DX) and upblast Fumex (FX) centrifugal roof exhausters are designed for roof mounted installations in low, medium to high pressure applications.

DX fans are ideal for general purpose exhaust applications, such as bathrooms, garages, and offices. FX fans are specially designed to discharge contaminated air away from building surfaces.



Domex (DX)

Fumex (FX)

Features:

- Now offering a wider range of fan speeds, CFM, static pressure

Fan	CFM	W.G.
DX 08	323	0.75
DX 10	622	1
FX 08	325	0.75
FX 10	644	1

Options:

- High wind construction
- Totally enclosed motor
- Compatible with Intelligent Pressure Control Module (iQ-IPCM) and Multi-Speed Controller (iQ-MS)



Intelligent Pressure Control Module
(iQ-IPCM)



Multi-Speed Controller
(iQ-MS)

For more information, contact your local sales representative or visit our website at www.pennbarry.com



PENNBARRY™