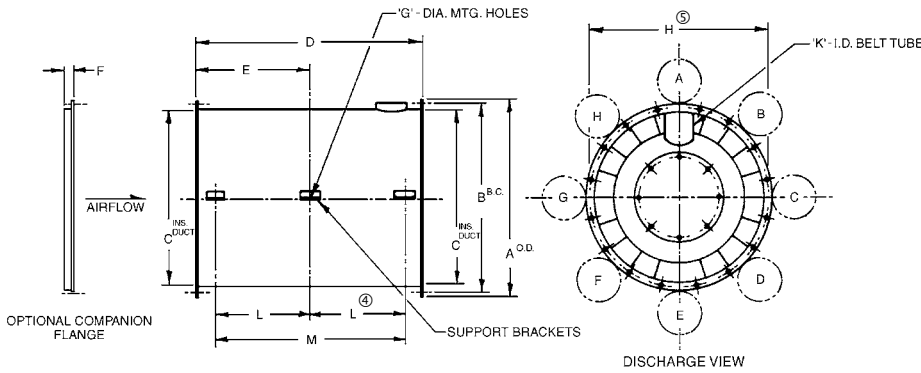


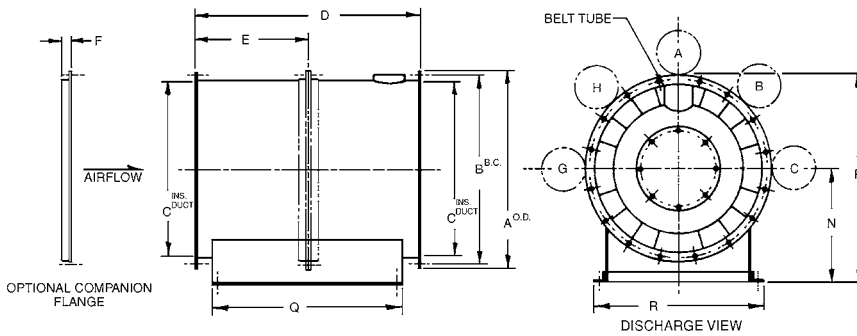
# Tubular Centrifugal Fan - TUB

## Horizontal - Arrangement 9, Class I, II & III

HORIZONTAL CEILING HUNG 182 - 542



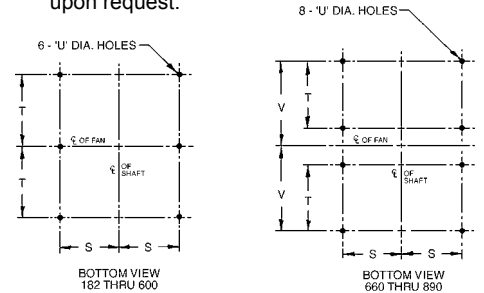
HORIZONTAL BASE MOUNTED 182 - 890



**TOLERANCE +/- 1/8**

**Notes:**

1. All units equipped with "J" dia. shaft and bearings.
2. All units equipped with adjustable motor base.
3. "L" dimension may vary when motor is located in "C" or "G" position.
- ④ For location of hanging clips on size 542 contact factory.
- ⑤ Mounting hole distance in support brackets.
6. On base mounted units motor available in A, B, C, G or H location only.
7. Size 660 and up are split into front and rear sections and are shipped in two (2) pieces for joining at job site.
8. Fan duct mounting holes:  
 182 - 270 = (12) 9/16 dia. holes equally spaced about a "B" dia. bolt circle.  
 300 - 365 = (16) 9/16 dia. holes equally spaced about a "B" dia. bolt circle.  
 402 - 445 = (16) 13/16 dia. holes equally spaced about a "B" dia. bolt circle.  
 490 - 890 = (24) 13/16 dia. holes equally spaced about a "B" dia. bolt circle.
9. Dimensions (inches) should not be used for construction. Certified drawings are available upon request.



### Dimensional Data

Size	'J' - Dia. Shaft											K	L	M	N	P	Q	R	S	T	U	V	Max Mtr Fr
	A	B	C	D	E	F	G	H	Class I	Class II	Class III												
182	28	26 3/4	24 11/16	32 1/4	16 1/8	1 1/2	9/16	27 1/8	1 7/16	1 7/16	1 11/16	6 5/8	—	27 1/4	16	30	27	21 1/4	10	12 7/8	7/16	—	286T
200	30 5/16	29 1/8	27 1/16	35 3/8	17 11/16	1 1/2	9/16	30	1 7/16	1 7/16	1 11/16	7 5/16	—	28 7/8	18	33 1/8	30	23 3/4	11	14 1/8	9/16	—	286T
222	33 3/8	32 1/8	30 1/16	39 1/4	19 5/8	1 1/2	9/16	33	1 7/16	1 11/16	2 3/16	8 1/8	—	32 3/4	20	36 11/16	34	26 1/4	12 1/4	16 1/8	9/16	—	326T
245	36 3/8	35 1/8	33 1/8	43 1/4	21 5/8	1 1/2	13/16	36 1/16	1 11/16	1 11/16	2 3/16	5 15/16	—	36 3/4	21	39 3/16	38	28 3/4	13 1/2	18 1/8	9/16	—	326T
270	39 3/4	38 1/2	36 1/2	47 5/8	23 13/16	1 1/2	13/16	39 7/16	1 11/16	1 15/16	2 7/16	9 7/8	—	41 1/8	23	42 7/8	42	30 1/4	14 1/4	20 1/8	9/16	—	326T
300	44 7/8	43 1/8	40 9/16	52 7/8	26 7/16	2	13/16	43 9/16	1 11/16	2 3/16	2 7/16	11	—	46 3/8	25	47 7/16	47 1/2	35 1/8	16 11/16	22 7/8	9/16	—	365T
330	49	47 1/4	44 5/8	58 1/8	29 1/16	2	13/16	47 5/8	1 11/16	2 3/16	2 11/16	12 1/8	—	51 5/8	27	51 1/2	53	38 7/8	18 9/16	25 5/8	9/16	—	365T
365	53 3/4	52	49 3/8	64 3/8	32 3/16	2	13/16	52 3/8	1 15/16	2 7/16	2 15/16	13 3/8	—	57 7/8	29	55 7/8	59	42 5/8	20 7/16	28 5/8	9/16	—	365T
402	59 3/4	57 1/2	54 3/8	70 7/8	35 7/16	2 1/2	13/16	57 7/8	2 3/16	2 11/16	3 7/16	14 13/16	31 7/16	62 7/8	33	62 7/8	65 3/4	47 1/2	22 5/8	31 7/8	13/16	—	365T
445	65 1/2	63 1/4	60 3/16	78 5/8	39 5/16	2 1/2	13/16	63 11/16	2 7/16	2 11/16	3 7/16	16 3/8	35 5/16	70 5/8	36	68 3/4	73	52	24 7/8	35 3/8	13/16	—	365T
490	71 5/8	69 3/8	66 1/4	86 3/8	43 3/16	2 1/2	13/16	69 3/4	2 15/16	3 7/16	3 15/16	17 15/16	39 3/16	78 3/8	39	74 13/16	81	58	27 7/8	39 3/8	13/16	—	365T
542	79 3/4	77	73 3/8	95 5/8	47 13/16	3	1 1/16	76 7/8	2 15/16	3 15/16	4 7/16	19 7/8	—	—	43	82 7/8	88	67	32 1/8	39 1/2	13/16	—	405T
600	87 1/2	84 3/4	81 3/16	105 5/8	52 13/16	3	—	—	3 7/16	4 7/16	4 15/16	22 1/16	—	—	47	90 3/4	98	72	34 5/8	44 1/2	13/16	—	405T
660	95 5/8	92 7/8	89 5/16	116 3/8	58 3/16	3	—	—	3 7/16	4 7/16	5 7/16	24 1/4	—	—	52	99 13/16	109	81	38 5/8	41	13/16	50	405T
730	107 1/8	104 3/8	98 3/4	128 1/2	64 1/4	3	—	—	3 15/16	4 15/16	5 15/16	26 7/8	—	—	57	110 9/16	121	88	42 1/8	47	13/16	56	405T
807	117 5/8	114 7/8	109 1/4	142 1/8	71 1/16	3	—	—	4 7/16	4 15/16	6 7/16	29 3/4	—	—	62	120 13/16	135	98	47 1/8	53	13/16	62	405T
890	128 3/4	126 1/16	120 5/16	156 1/4	78 1/8	3	—	—	4 15/16	5 15/16	6 15/16	39 9/16	—	—	68 1/2	132 7/8	146 1/2	106	51 1/8	58	13/16	67 3/4	405T

**PENNBARRY™**

1401 North Plano Road, Richardson, TX 75081  
 Ph: 972.234.3202 Fax: 972.497.0468  
 www.PennBarry.com

## Submittal Sheet

### Tubular Centrifugal Fan

#### Horizontal Arrangement 9, Class I, II, & III

This drawing illustrates our understanding of order requirements. When approved, it represents details for fabrication, as such, PennBarry will not be responsible for revisions in the field or other changes after release for fabrication. Published and protected by PennBarry, Richardson, TX. All rights reserved. May not be reproduced partially or in full without permission from the publisher. No rights conveyed to manufacture partially or in full, use or sell either the method of construction represented or any invention in any way related thereto.