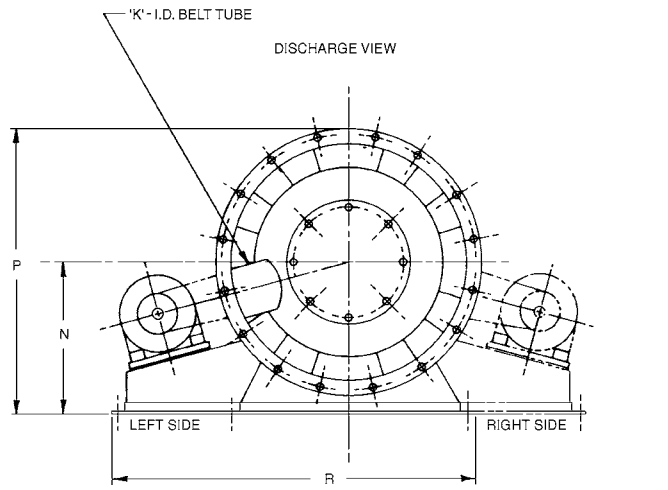
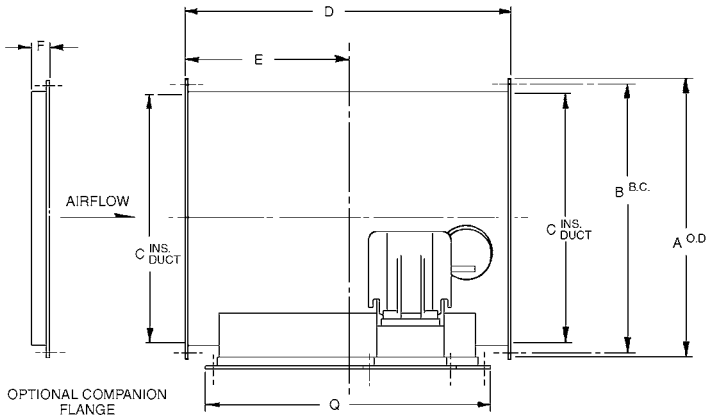
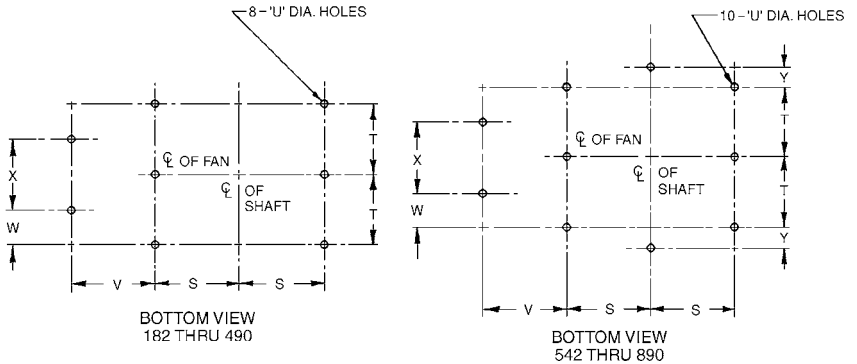


Tubular Centrifugal Fan - TUB Horizontal - Arrangement 1, Class I & II



Notes:

1. All units equipped with "J" dia. shaft and bearings.
2. Motor available on R = Right Side or L = Left Side as viewed from discharge.
3. Fan duct mounting holes:
 182 - 270 = (12) 9/16 dia. holes equally spaced about a "B" dia. bolt circle.
 300 - 365 = (16) 9/16 dia. holes equally spaced about a "B" dia. bolt circle.
 402 - 445 = (16) 13/16 dia. holes equally spaced about a "B" dia. bolt circle.
 490 - 890 = (24) 13/16 dia. holes equally spaced about a "B" dia. bolt circle.
4. Dimensions (inches) should not be used for construction. Certified drawings are available upon request.



TOLERANCE +/- 1/8 inch

Dimensional Data

Size	A	B	C	D	E	F	J - Dia Sft		K	N	P	Q	R	S	T	U	V	W	X	Y	Max Mtr Fr
							Class I	Class II													
182	28	26 3/4	24 11/16	32 1/4	16 1/8	1 1/2	1 7/16	1 7/16	Contact Factory For Dimensional Data												184T
200	30 5/16	29 1/8	27 1/16	35 5/8	17 11/16	1 1/2	1 7/16	1 7/16		256T											
222	33 3/8	32 1/8	30 1/16	39 1/4	19 5/8	1 1/2	1 7/16	1 11/16		256T											
245	36 3/8	35 1/8	33 1/8	43 1/4	21 5/8	1 1/2	1 11/16	1 11/16		256T											
270	39 3/4	38 1/2	36 1/2	47 5/8	23 13/16	1 1/2	1 11/16	1 15/16		256T											
300	44 7/8	43 1/8	40 9/16	52 7/8	26 7/16	2	1 11/16	2 3/16		326T											
330	49	47 1/4	44 5/8	58 1/8	29 1/16	2	1 11/16	2 3/16		326T											
365	53 3/4	52	49 3/8	64 3/8	32 3/16	2	1 15/16	2 7/16		365T											
402	59 3/4	57 1/2	54 3/8	70 7/8	35 7/16	2 1/2	2 3/16	2 11/16		365T											
445	65 1/2	63 1/4	60 3/16	78 5/8	39 5/16	2 1/2	2 7/16	2 11/16		405T											
490	71 5/8	69 3/8	66 1/4	86 3/8	43 3/16	2 1/2	2 15/16	3 7/16		405T											
542	79 3/4	77	73 3/8	95 5/8	47 13/16	3	2 15/16	3 15/16		405T											
600	87 1/2	84 3/4	81 3/16	105 5/8	52 13/16	3	3 7/16	4 7/16		405T											
660	97 5/8	94 7/8	89 5/16	116 3/8	58 3/16	3	3 7/16	4 7/16		405T											
730	107 1/8	104 3/8	98 3/4	128 1/2	64 1/4	3	3 15/16	4 15/16		445T											
807	117 5/8	114 7/8	109 1/4	142 1/8	71 1/16	3	4 7/16	4 15/16		445T											
890	128 3/4	126 1/16	120 5/16	156 1/4	78 1/8	3	4 15/16	5 15/16		445T											

PENNBARRY™

1401 North Plano Road, Richardson, TX 75081
 Ph: 972.234.3202 Fax: 972.497.0468
 www.PennBarry.com

Submittal Sheet

Tubular Centrifugal Fan

Horizontal Arrangement 1, Class I & II

This drawing illustrates our understanding of order requirements. When approved, it represents details for fabrication, as such, PennBarry will not be responsible for revisions in the field or other changes after release for fabrication. Published and protected by PennBarry, Richardson, TX. All rights reserved. May not be reproduced partially or in full without permission from the publisher. No rights conveyed to manufacture partially or in full, use or sell either the method of construction represented or any invention in any way related thereto.