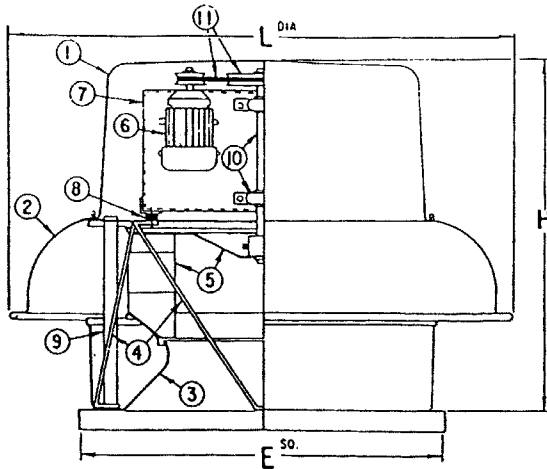
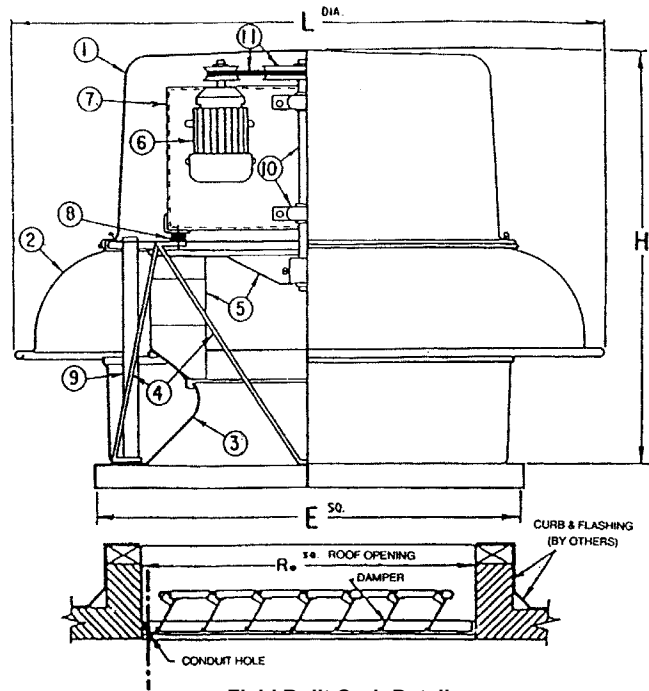


Domex

Belt Drive Models DX11B - DX14B



Belt Drive Models DX16B - DX36B



Legend

- | | |
|--------------------------|--------------------------|
| 1. Motor Dome* | 7. Motor Support Plate |
| 2. Discharge Apron* | 8. Anti-Vibration Mounts |
| 3. Spun Inlet Venturi | 9. Conduit Guide |
| 4. Tri-Strut™ Brace | 10. Fan Shaft & Bearings |
| 5. Centrifugal Fan Wheel | 11. Belt & Pulleys |
| 6. Motor | |

Dimensional Data: Belt Drive Models

	DX11B	DX12B	DX14B	DX16B	DX18B	DX24B	DX27B	DX30B	DX36B
L	28 1/2	33 1/2	33 1/2	39	39	46	53 1/2	53 1/2	66
H	25 7/16	29	29	31	31	33 1/2	35 1/2	35 1/2	41
E†	20 1/2	24 3/4	24 3/4	28 1/2	28 1/2	33 1/2	36 1/2	36 1/2	44 1/2
Ro	16	16	16	20	20	25	28	28	36

† Outside dimension of curb should be 1 1/2" less than 'E' dimension • Motor Dome and Discharge Apron 1 piece on models DX12B & DX14B.

* At PennBarry's option, large frame motors may be removed after testing and shipped separately.

Material: Spun Aluminum Housing



PENNBARRY™

1401 North Plano Road, Richardson, TX 75081

Ph: 972.234.3202 Fax: 972.497.0468

www.PennBarry.com

Submittal Sheet Domex - Belt Drive Spun Aluminum Centrifugal Roof Exhausters