



LC08



LC DYNAFAN

Model: LC
Low Contour Centrifugal
Roof Exhausters
Direct Drive and Belt Drive

MOVING YOUR WAY

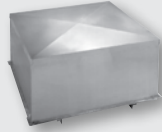
› LC Dynafan

Model: LC Direct Drive

- Static pressure up to 1.5 in. wg.
- Flow capacity up to 2072 CFM

Model: LC Belt Drive

- Static pressure up to 1.25 in. wg.
- Flow capacity up to 17,516 CFM



Introduction 2

Direct Drive Dimensional & Performance Data 4

Belt Drive Dimensional & Performance Data 5

Engineering Specifications 10

Limited Warranty 12

› **UL and CSA Certification**

PennBarry LC Dynafan exhausters carry the UL label. Check Underwriter’s Laboratories Re-examination Service for specific units listed.



PennBarry LC Dynafan exhausters are also certified by Canadian Standard Association.



PennBarry reserves the right to make changes at any time, without notice, to models, construction, specifications, options, availability, etc. This bulletin illustrates the appearance of PennBarry products at the time of publication. To view the latest updates, visit PennBarry at www.pennbarry.com.

General Information

Low Contour Centrifugal Roof Exhausters



LC Dynafan

› LC Dynafan

Belt driven LC Dynafans offer a wide range of sizes with capacities extending over 17,000 CFM. Units are low and inconspicuous, with a unique design that features motor mounting beside the wheel rather than atop the wheel. Large wheels turning at moderate speeds provide quieter operation and airstream cooling for the motors and bearings. Units float on vibration isolators. Ball bearing motors, sheaves, belts and self-aligning ball bearings are all standard brands of national manufacturers. All components are selected for durability, efficiency and value.

PennBarry's LC Dynafan units are completely self-contained packaged exhaust systems. Direct drive units are especially effective at providing a quiet steady exhaust at moderate resistance. Direct drive units offer extensive performance flexibility when used with the Lek-Trol speed controller. Lek-Trol switches employ solid state circuitry to enable air movement adjustment from full to half of capacity. Additional Dynafan construction features include low profile housings of sturdy steel or durable aluminum, dynafoil impellers and a strong welded and reinforced chassis. These housings are removable or hinged for easy access to all components and can be fitted with expanded metal bird and debris guards.

› LC Dynafan

Model: LC Direct Drive

- Static pressure up to 1.5 in. wg.
- Flow capacity up to 2072 CFM

Model: LC Belt Drive

- Static pressure up to 1.25 in. wg.
- Flow capacity up to 17,516 CFM

L
C

D
y
n
a
f
a
n

Features, Benefits, Options, Accessories & Motor Selection

› Motor Selection

Both direct drive and belt drive models are available with a wide range of voltages and enclosures (see Motor Selection for a complete listing). Standard belt drive Open Drip Proof (ODP) ball bearing motors are selected using a conservative portion of the NEMA service factor. Standard direct drive ODP motors have Class B insulation and internal thermal overload protection. Each size is carefully engineered to match the motor to the wheel capacity.

› Internal Wiring

All direct drive models with ODP motors feature a polarized disconnect plug between the motor and junction box. This provides a positive method of electric shut-off. Belt drive units with ODP motors are factory-wired between the motor and junction box. For either direct drive or belt drive models, an electric disconnect is available.

› Backdraft Dampers

Open and close with stop/start of fan. Square frame, multileaf, roll formed aluminum blades have nylon bearings. This damper is also used with the PennBarry Damper Motor Kit for positive control through electric motor operation as required.

› Sound Performance

Units deliver outstanding air performance with minimal noise.

› Solid Steel Shafts

Sized so the first critical speed is a minimum of 130% of maximum cataloged operating speed, shafts are precision ground, polished and treated for rust resistance.

› Installation

Installing contractors should secure mounting base to roof curbs with lag bolts and washers or other proper fasteners 12" O.C. In areas subjected to high winds it is recommended that large units be guyed down. Refer to Publication 410 of Air Movement & Control Association (AMCA).

› Firestat Switches

This safety device is mounted below the fan and automatically disconnects the unit when the temperature of the air being exhausted exceeds a pre-set rating.

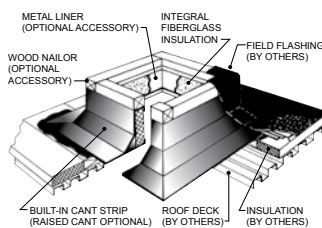
› Screen & Fan Guards

Diamond Mesh aluminum expanded metal is used for bird and debris guard when specified. 18 x 14 mesh aluminum wire can be provided to effectively exclude insects. All fans have moving parts which require guarding in the same way as other moving machinery. Inlet and discharge openings for PennBarry units can be easily and neatly fitted with framed safety guards when specified. Guards which comply with OSHA regulations should be installed when fans are located within seven feet of floor and/or working level, or within reach of personnel, review OSHA codes.

› Roof Curbs

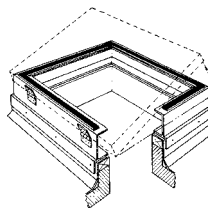
Roof curbs are furnished in a variety of types from canted or self-flashing to sloped or flat pitch. Standard construction includes galvanized or aluminum material, insulation, and metal, rubber gasketing or wood nailer mounting surface. See the roof curbs brochure for details.

Illustrated here, is the Unibeam which is most generally used with Hi-Ex vertical discharge ventilators. Costs of this device are normally less than field built curbs. The Unibeam shown is for flat roof installation.



› Hinged Sub-Base

Hinged sub-bases can be utilized to provide access to curb mounted dampers where overall heights are an important consideration. A rustproof hinge arrangement permits full access to curb well for damper service. This accessory is available for use with an adapter for most field-built curbs.



› Safety Disconnect Switch

Safety disconnect switches are available to allow positive electrical shut-off and safety. Switches are factory mounted when factory wiring is requested. Wiring is only run from the motor to the junction box. (Factory wiring of explosion proof applications is not available.) A wide range of Nema rated enclosures with disconnect switches are available for indoor, outdoor, and explosion proof installations. Disconnects are to be field wired by a licensed electrician.



› Time-Delay Switch

(Selected direct drive models only) The Airminder Model AM12 switch is a UL recognized and CSA certified time-delay relay that operates both the fan and room light to ventilate an area even after the occupants depart. In the "On" position, the Airminder turns the light and fan on immediately. In the "Off" position, the light goes off immediately and the fan is in operation for a period of time as pre-set from 1 to 60 minutes. Suitable only for 1/3 HP maximum at 120V/1/60.



› Lek-Trol Variable Speed Controller Switch

The Lek-Trol variable speed controller permits you to control air movement from 100% of capacity to approximately 50%. The Lek-Trol employs the latest type of solid state "quadrac" circuitry and insures not only complete speed-range control and extra long-life reliability but also a savings in the cost of electricity. This solid state controller is much better suited to this type of fan than conventional speed controllers. Lek-Trols can be installed and connected within the fan hood. This option permits precise system balancing without unauthorized tampering of the setting and airflow.

Dimensional Information & Performance Data

LC Dynafan | Direct Drive

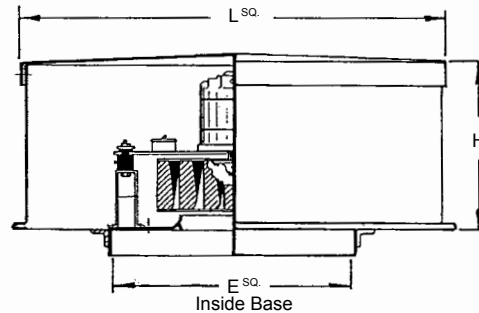


LC06 & LC12

› LC Dynafan

LC Dynafan direct drive models are available with single and multi-speed motors. Multi-speed motors are designated V (1050 RPM), S (1300 RPM), and R (1550 RPM). A single LC Dynafan fan may be suitable for several requirements by a simple wiring change. This feature provides flexibility for a variety of reasons, including energy savings, off-hours requirements, future expansion, or unexpected field variations.

› LC Dynafan Inside Base



› LC Dimensional Data

Model	Unit Dimensions				Field Built Curb		Self Flashing Sonotrol Curb			Fabricated Unibeam Curb			Unibeam Ultra Sonotrol Curb			Ship wt. (less Curb) lbs.
	L	L'	H	E	T	Ro	Ro	O	T	Ro	O	T	Ro	O	T	
LC06VC	24	24	16	18 1/2	17	9	9	15	18	9	14	17	9	14	17	75
LC06SC	24	24	16	18 1/2	17	9	9	15	18	9	14	17	9	14	17	75
LC06RC	24	24	16	18 1/2	17	9	9	15	18	9	14	17	9	14	17	75
LC12VC	33	33	21	20 1/2	19	11 1/2	11 1/2	17	20	11 1/2	16	19	11 1/2	16	19	95
LC12SC	33	33	21	20 1/2	19	11 1/2	11 1/2	17	20	11 1/2	16	19	11 1/2	16	19	95
LC12RC	33	33	21	20 1/2	19	11 1/2	11 1/2	17	20	11 1/2	16	19	11 1/2	16	19	95

All dimensions in inches. T = Outside Curb Dimension, Ro = Roof Opening Dimension, O = Inside Curb Dimension

LC Dynafan direct drive models are available in two sizes (6 and 12). Capacities range from below 150 CFM to above 2000 CFM, with static pressures beyond 1 1/4".

By using Lek-Trol™ variable speed controllers, the high speed flow rate of most models can be reduced by as much as 50%. Do not use Lek-Trol™ on medium or low speed for multi-speed models, unless a specific Lek-trol™ is shown to be available (see below for Lek-Trol™ speed controller availability).

When compared to belt drive models, LC Dynafan direct drive fans require less maintenance, have a simpler construction, cost less, and are lighter in weight.

Model No.	Lek-Trol Model
LC06RC	LT30
LC12RC	LT50

Performances in 50 Hz applications will be less than shown below; consult with local PennBarry representative.

› LC Performance Data

Model	HP	MAX. WATTS	RPM	TIP SPEED	0.000" SP		0.125" SP		0.250" SP		0.375" SP		0.500" SP	
					CFM	SONES	CFM	SONES	CFM	SONES	CFM	SONES	CFM	SONES
LC06VC	1/25	105	1050	3058	417	2.4	242	2.3	163	3.4	120	4.3	80	5.2
LC06SC	1/11	147	1300	3786	551	4.0	420	4.5	347	5.2	283	6.1	219	6.6
LC06RC	1/7	196	1550	4514	787	7.6	691	7.5	614	7.6	530	8.1	455	8.7
LC12VC	1/6	479	1050	3788	1410	7.5	1243	6.1	1055	5.1	878	6.4	730	7.4
LC12SC	1/3	533	1300	4721	1798	10.4	1618	9.0	1452	7.8	1266	8.0	1119	8.1
LC12RC	1/2	600	1550	5592	2072	13.1	1918	12.0	1783	11.2	1639	10.6	1495	10.6

Model	HP	MAX. WATTS	RPM	TIP SPEED	0.625" SP		0.750" SP		1.000" SP		1.250" SP		1.500" SP	
					CFM	SONES	CFM	SONES	CFM	SONES	CFM	SONES	CFM	SONES
LC06VC	1/25	105	1050	3058	39	6.1	-	-	-	-	-	-	-	-
LC06SC	1/11	147	1300	3786	162	7.1	110	7.6	-	-	-	-	-	-
LC06RC	1/7	196	1550	4514	382	8.8	283	9.0	104	9.5	-	-	-	-
LC12VC	1/6	479	1050	3788	633	8.2	543	9.4	341	9.7	198	10.1	83	11.1
LC12SC	1/3	533	1300	4721	979	8.7	880	9.3	692	10.2	484	10.8	260	11.5
LC12RC	1/2	600	1550	5592	1354	10.7	1212	10.9	950	11.9	688	12.5	406	13.2

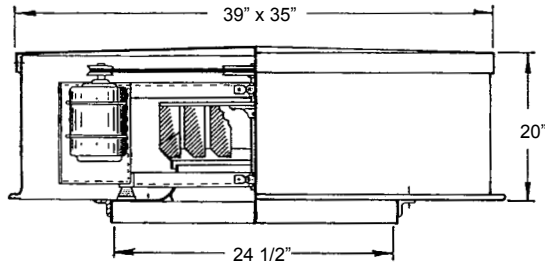
Performance shown is for installation type A: Free Inlet, Free Outlet. Speed (RPM) shown is nominal. Performance is based on actual speed of test. The sound ratings shown are for loudness values in fan sones at 5'0" (1.5m) in a hemispherical free field per AMCA Standard 301. Values shown are for Installation Type A: free inlet fan sone levels. Performance ratings include the effects of screen in the airstream. For models shown on this page, the AMCA Certified Ratings Seal applies to air and sound. Watt ratings shown are for models tested at 115/1/60.

©PENN BARRY 2008

Low Contour Centrifugal Roof Exhausters

L C D Y N A F A N

› LC12BC Dimensional Data



Roof Opening = 16 1/4"	Ship WT (LBS) = 215	Max RPM = 1729 (1HP)
Damper Size = 15 3/4"	Galv. Hood = 20 Gauge	Alum. Base = .080

› LC12BC Performance Data

HP	RPM	Tip Speed FPM	0.000" SP		0.125" SP		0.250" SP		0.375" SP		0.500" SP		0.625" SP		0.750" SP		0.875" SP		1.000" SP		1.250" SP					
			Sones	BHP	Sones	BHP	Sones	BHP	Sones	BHP	Sones	BHP	Sones	BHP	Sones	BHP	Sones	BHP	Sones	BHP	Sones	BHP	Sones	BHP		
1/4	715	2597	1297	6.0	1037	5.1	685	4.8	-	-	-	-	-	-	-	-	-	-	-	-	-	-				
	779	2830	1414	7.2	1176	6.3	907	6.0	-	-	-	-	-	-	-	-	-	-	-	-	-	-				
			7.2	0.09	6.3	0.10	6.0	0.10	-	-	-	-	-	-	-	-	-	-	-	-	-	-	-			
	841	3055	1526	8.1	1304	7.2	1074	6.9	676	6.7	-	-	-	-	-	-	-	-	-	-	-	-	-			
			8.1	0.12	7.2	0.12	6.9	0.12	6.7	0.11	-	-	-	-	-	-	-	-	-	-	-	-	-	-		
	1000	3632	1815	10.3	1621	9.1	1442	8.3	1238	8.0	917	-	-	-	-	-	-	-	-	-	-	-	-			
			10.3	0.19	9.1	0.20	8.6	0.20	8.3	0.21	8.0	0.19	-	-	-	-	-	-	-	-	-	-	-	-		
1078	3916	1956	10.8	1773	9.6	1614	8.7	1428	8.5	1206	833	-	-	-	-	-	-	-	-	-	-	-				
		10.8	0.24	9.6	0.25	9.1	0.25	8.7	0.26	8.5	0.25	8.3	0.23	-	-	-	-	-	-	-	-	-	-			
1133	4116	2056	11.3	1882	10.0	1728	9.1	1555	8.9	1370	1094	554	-	-	-	-	-	-	-	-	-	-				
		11.3	0.28	10.0	0.29	9.4	0.29	9.1	0.30	8.9	0.30	8.8	0.28	8.7	0.21	-	-	-	-	-	-	-	-			
1/3	1168	4243	2120	11.6	1951	10.3	1800	9.3	1636	9.1	1466	1223	847	-	-	-	-	-	-	-	-	-				
			11.6	0.31	10.3	0.32	9.7	0.32	9.3	0.33	9.1	0.33	9.1	0.32	9.0	0.28	-	-	-	-	-	-	-	-		
	1180	4286	2142	11.7	1975	10.5	1825	9.4	1664	9.2	1497	1264	908	-	-	-	-	-	-	-	-	-				
			11.7	0.32	10.5	0.33	9.7	0.33	9.4	0.34	9.2	0.34	9.2	0.33	9.2	0.30	-	-	-	-	-	-	-	-		
	1204	4373	2185	11.9	2022	10.7	1874	9.6	1719	9.4	1554	1345	1027	-	-	-	-	-	-	-	-	-	-			
11.9			0.34	10.7	0.35	9.9	0.35	9.6	0.36	9.4	0.36	9.3	0.35	9.5	0.33	-	-	-	-	-	-	-	-	-		
1220	4432	2214	12.1	2053	10.9	1907	9.8	1755	9.5	1591	1398	1102	551	-	-	-	-	-	-	-	-	-				
		12.1	0.35	10.9	0.36	10.1	0.37	9.8	0.37	9.5	0.38	9.4	0.37	9.7	0.35	9.6	0.25	-	-	-	-	-	-	-		
1/2	1250	4541	2269	12.5	2112	11.3	1967	10.0	1823	9.7	1661	1486	1238	855	-	-	-	-	-	-	-	-				
			12.5	0.38	11.3	0.39	10.4	0.39	10.0	0.40	9.7	0.41	9.7	0.40	10.1	0.38	10.0	0.33	-	-	-	-	-	-		
	1295	4704	2350	12.7	2200	11.5	2057	10.3	1923	10.0	1765	1610	1393	1084	474	-	-	-	-	-	-	-	-			
			12.7	0.42	11.5	0.43	10.6	0.44	10.3	0.44	10.0	0.45	9.9	0.45	10.6	0.44	10.6	0.40	10.3	0.28	-	-	-	-		
	1340	4868	2432	13.1	2287	12.0	2146	10.7	2018	10.6	1869	1723	1543	1292	933	-	-	-	-	-	-	-	-			
			13.1	0.47	12.0	0.47	11.0	0.48	10.7	0.49	10.4	0.50	10.3	0.50	10.6	0.49	11.2	0.47	11.0	0.42	-	-	-	-		
	1360	4940	2468	13.3	2326	12.2	2186	10.8	2060	10.6	1915	1770	1601	1372	1036	-	-	-	-	-	-	-	-			
13.3			0.49	12.2	0.50	11.2	0.50	10.8	0.51	10.6	0.52	10.4	0.52	10.7	0.52	11.4	0.50	11.2	0.45	-	-	-	-			
1386	5035	2516	13.6	2376	12.5	2237	11.1	2113	10.8	1975	1831	1674	1461	1167	-	-	-	-	-	-	-	-				
		13.6	0.52	12.5	0.52	11.5	0.53	11.1	0.54	10.8	0.55	10.6	0.55	10.7	0.55	11.5	0.53	11.5	0.50	-	-	-	-			
1403	5096	2546	13.8	2409	12.7	2270	11.3	2149	11.0	2014	1870	1721	1519	1246	-	-	-	-	-	-	-	-				
		13.8	0.54	12.7	0.54	11.7	0.55	11.3	0.56	11.0	0.57	10.8	0.57	10.9	0.57	11.5	0.55	11.8	0.52	-	-	-	-			
3/4	1425	5176	2586	14.0	2451	12.9	2313	11.5	2194	11.2	2064	1921	1781	1593	1347	-	-	-	-	-	-	-				
			14.0	0.56	12.9	0.57	11.9	0.58	11.5	0.59	11.2	0.59	11.0	0.60	11.1	0.60	11.6	0.59	12.0	0.56	-	-	-	-		
	1510	5485	2741	15.0	2614	13.9	2479	12.3	2367	12.1	2252	2117	1986	1844	1658	-	-	-	-	-	-	-	-			
			15.0	0.67	13.9	0.68	12.9	0.69	12.3	0.69	12.1	0.70	11.9	0.71	11.8	0.71	12.0	0.71	12.5	0.69	12.9	0.61	-	-	-	-
	1550	5630	2813	15.5	2689	14.4	2558	12.7	2447	12.5	2336	2209	2079	1953	1791	1306	-	-	-	-	-	-	-			
			15.5	0.72	14.4	0.73	13.4	0.74	12.7	0.75	12.5	0.76	12.3	0.77	12.1	0.77	12.3	0.77	12.6	0.76	13.4	0.69	-	-	-	-
	1575	5721	2859	15.8	2737	14.8	2607	13.0	2497	12.8	2388	2266	2136	2013	1862	1422	-	-	-	-	-	-	-	-		
15.8			0.76	14.8	0.77	13.7	0.78	13.0	0.79	12.8	0.79	12.6	0.80	12.4	0.81	12.5	0.81	12.8	0.80	13.7	0.74	-	-	-	-	
1612	5856	2926	16.2	2807	15.1	2681	13.3	2571	13.0	2464	2350	2221	2101	1965	1592	-	-	-	-	-	-	-	-			
		16.2	0.81	15.1	0.82	14.1	0.83	13.3	0.84	13.0	0.85	12.9	0.86	12.7	0.87	12.8	0.87	13.0	0.86	14.2	0.82	-	-	-	-	
1	1640	5957	2977	16.5	2860	15.4	2736	14.4	2626	13.3	2522	2413	2287	2166	2042	1690	-	-	-	-	-	-	-			
			16.5	0.85	15.4	0.86	14.4	0.88	13.6	0.89	13.3	0.89	13.1	0.90	12.9	0.91	12.9	0.91	13.1	0.91	14.4	0.87	-	-	-	-
	1660	6030	3013	16.7	2897	15.6	2776	14.0	2666	13.4	2563	2458	2333	2213	2096	1758	-	-	-	-	-	-	-	-		
			16.7	0.89	15.6	0.90	14.6	0.91	13.8	0.92	13.4	0.92	13.3	0.93	13.1	0.94	13.0	0.95	13.2	0.94	14.4	0.91	-	-	-	-
	1680	6103	3049	16.9	2935	15.8	2815	14.0	2705	13.6	2604	2500	2379	2259	2144	1826	-	-	-	-	-	-	-	-		
			16.9	0.92	15.8	0.93	14.8	0.94	14.0	0.95	13.6	0.96	13.4	0.96	13.2	0.98	13.2	0.98	13.3	0.98	14.4	0.95	-	-	-	-
	1700	6175	3086	17.2	2973	16.1	2854	14.2	2744	13.8	2645	2543	2425	2305	2191	1893	-	-	-	-	-	-	-	-		
17.2			0.95	16.1	0.96	15.0	0.97	14.2	0.98	13.8	0.99	13.6	1.00	13.4	1.01	13.3	1.02	13.5	1.02	14.4	1.00	-	-	-	-	
1728	6277	3136	17.6	3025	16.4	2909	14.5	2799	14.0	2702	2601	2489	2369	2257	1986	-	-	-	-	-	-	-	-			
			17.6	1.00	16.4	1.01	15.3	1.02	14.5	1.03	14.0	1.04	13.9	1.05	13.7	1.06	13.5	1.07	13.7	1.07	14.5	1.06	-	-	-	-

Performance shown is for installation type A: Free Inlet, Free Outlet. Power rating (BHP) does not include drive losses. Selection software automatically calculates drive losses when selecting equipment. The sound ratings shown are for loudness values in fan sonas at 50' (1.5m) in a hemispherical free field per AMCA Standard 301. Values shown are for installation Type A: free inlet fan sone levels. Performance ratings include the effects of screen in the airstream.

Low Contour Centrifugal Roof Exhausters

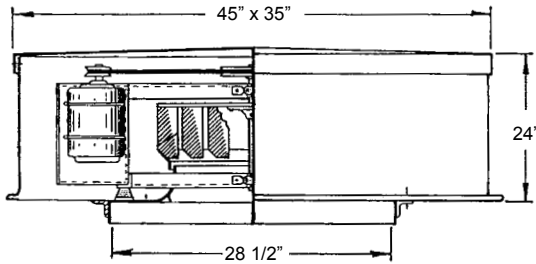
Dimensional Information & Performance Data

LC Dynafan | Belt Drive



LC20BC

LC20BC Dimensional Data



Roof Opening = 20"	Ship WT (LBS) = 250	Max RPM = 1350 (1.5HP)
Damper Size = 19 3/4"	Galv. Hood = 20 Gauge	Alum. Base = .080

LC20BC Performance Data

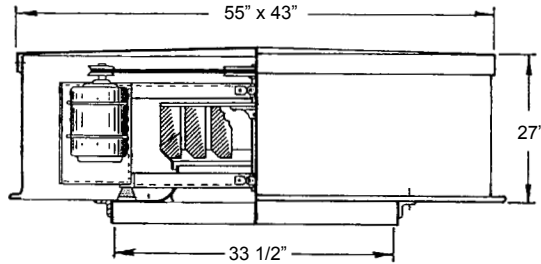
HP	RPM	Tip Speed FPM	0.000" SP		0.125" SP		0.250" SP		0.375" SP		0.500" SP		0.625" SP		0.750" SP		0.875" SP		1.000" SP		1.250" SP			
			Sones	BHP	Sones	BHP	Sones	BHP	Sones	BHP	Sones	BHP	Sones	BHP	Sones	BHP	Sones	BHP	Sones	BHP	Sones	BHP		
1/4	410	2174	2068		1580		-		-		-		-		-		-		-		-			
			4.3	0.06	3.5	0.07	-	-	-	-	-	-	-	-	-	-	-	-	-	-	-	-	-	
	430	2280	2168		1710		-		-		-		-		-		-		-		-		-	
			4.8	0.07	3.9	0.08	-	-	-	-	-	-	-	-	-	-	-	-	-	-	-	-	-	
	450	2386	2269		1838		-		-		-		-		-		-		-		-		-	
			5.3	0.08	4.3	0.09	-	-	-	-	-	-	-	-	-	-	-	-	-	-	-	-	-	
	495	2624	2496		2113		1573		-		-		-		-		-		-		-		-	
			6.6	0.10	5.3	0.12	5.5	0.12	-	-	-	-	-	-	-	-	-	-	-	-	-	-	-	-
	530	2810	2673		2319		1890		-		-		-		-		-		-		-		-	
7.4			0.12	6.1	0.14	6.2	0.15	-	-	-	-	-	-	-	-	-	-	-	-	-	-	-	-	
586	3107	2955		2639		2275		1599		-		-		-		-		-		-		-		
		8.7	0.17	7.3	0.19	7.4	0.20	7.5	0.19	-	-	-	-	-	-	-	-	-	-	-	-	-	-	
630	3340	3177		2887		2559		2144		-		-		-		-		-		-		-		
		10.1	0.21	8.4	0.23	8.4	0.25	8.6	0.26	-	-	-	-	-	-	-	-	-	-	-	-	-	-	
663	3515	3344		3071		2765		2422		-		-		-		-		-		-		-		
		10.6	0.24	9.0	0.27	8.8	0.29	8.9	0.30	-	-	-	-	-	-	-	-	-	-	-	-	-	-	
693	3674	3495		3235		2946		2624		2132		-		-		-		-		-		-		
		11.1	0.27	9.6	0.30	9.2	0.33	9.3	0.34	9.4	0.34	-	-	-	-	-	-	-	-	-	-	-	-	
713	3780	3596		3343		3066		2756		2344		-		-		-		-		-		-		
		11.5	0.30	10.0	0.33	9.5	0.35	9.6	0.37	9.6	0.37	-	-	-	-	-	-	-	-	-	-	-	-	
1/2	740	3923	3732		3488		3224		2932		2588		-		-		-		-		-			
			12.2	0.33	10.6	0.37	9.9	0.39	10.0	0.41	10.0	0.42	-	-	-	-	-	-	-	-	-	-	-	
	760	4029	3833		3595		3340		3060		2760		2135		-		-		-		-			
			12.7	0.36	11.0	0.39	10.3	0.42	10.4	0.44	10.4	0.45	10.3	0.43	-	-	-	-	-	-	-	-		
790	4188	3984		3756		3512		3251		2962		2555		-		-		-		-		-		
		13.6	0.41	11.8	0.44	10.8	0.47	10.9	0.49	10.9	0.51	10.8	0.51	-	-	-	-	-	-	-	-	-		
820	4347	4136		3915		3683		3435		3161		2828		2032		-		-		-		-		
		14.3	0.45	12.5	0.49	11.3	0.52	11.3	0.54	11.3	0.56	11.2	0.57	11.0	0.50	-	-	-	-	-	-	-	-	
3/4	850	4506	4287		4075		3853		3616		3356		3087		2632		-		-		-			
			14.7	0.51	13.0	0.54	11.7	0.57	11.7	0.60	11.7	0.62	11.6	0.64	11.5	0.62	-	-	-	-	-	-		
	900	4771	4539		4339		4134		3912		3677		3423		3113		2539		-		-		-	
15.9			0.60	14.1	0.64	12.7	0.68	12.5	0.70	12.6	0.73	12.5	0.74	12.3	0.75	12.1	0.71	-	-	-	-	-		
943	4999	4756		4565		4373		4161		3943		3705		3462		3099		2222		-		-		
		17.4	0.69	15.6	0.73	13.9	0.77	13.3	0.80	13.4	0.83	13.5	0.85	13.3	0.87	13.0	0.86	12.8	0.74	-	-	-		
1	960	5089	4842		4654		4466		4259		4046		3815		3577		3254		2675		-			
			18.1	0.73	16.2	0.77	14.4	0.81	13.7	0.84	13.7	0.87	13.9	0.89	13.7	0.91	13.4	0.91	13.2	0.86	-	-		
	990	5248	4993		4811		4628		4430		4227		4008		3777		3522		3147		-			
			19.5	0.80	17.3	0.84	15.5	0.88	14.5	0.92	14.4	0.95	14.6	0.97	14.4	0.99	14.2	1.00	13.9	0.99	-	-		
	1011	5360	5099		4920		4742		4549		4352		4141		3915		3689		3339		-			
20.0			0.85	17.9	0.89	16.2	0.94	15.0	0.97	14.8	1.00	15.1	1.03	15.0	1.05	14.8	1.07	14.5	1.06	-	-			
1040	5513	5245		5072		4898		4713		4521		4321		4104		3884		3602		-				
		20.0	0.93	18.4	0.97	16.8	1.02	15.4	1.05	15.3	1.08	15.6	1.11	15.7	1.14	15.5	1.16	15.3	1.16	-	-			
1 1/2	1070	5673	5397		5228		5059		4882		4696		4504		4298		4084		3868		2922			
			21.0	1.01	19.2	1.06	17.6	1.10	16.1	1.14	15.9	1.17	16.2	1.20	16.6	1.23	16.4	1.25	16.1	1.27	15.5	1.18		
	1090	5779	5497		5332		5166		4994		4811		4625		4425		4216		4006		3276			
			22.0	1.07	19.9	1.11	18.2	1.16	16.8	1.20	16.3	1.24	16.7	1.27	17.1	1.29	17.1	1.32	16.8	1.34	16.0	1.30		
	1100	5832	5548		5384		5220		5050		4869		4685		4489		4281		4073		3443			
			22.0	1.10	20.0	1.14	18.6	1.19	17.1	1.23	16.5	1.27	16.9	1.30	17.3	1.33	17.4	1.35	17.1	1.37	16.3	1.36		
	1130	5991	5699		5539		5380		5217		5040		4864		4677		4476		4274		3731			
23.0			1.19	21.0	1.24	19.8	1.29	18.2	1.33	17.2	1.37	17.6	1.40	18.1	1.43	18.6	1.45	18.3	1.48	17.4	1.48			
1162	6160	5861		5705		5550		5394		5223		5051		4872		4682		4485		4020				
		24.0	1.29	22.0	1.34	21.0	1.39	19.4	1.44	18.2	1.48	18.4	1.51	18.7	1.55	19.1	1.57	19.2	1.59	18.5	1.62			

Performance shown is for installation type A: Free Inlet, Free Outlet. Power rating (BHP) does not include drive losses. Selection software automatically calculates drive losses when selecting equipment. The sound ratings shown are for loudness values in fan sones at 5'0" (1.5m) in a hemispherical free field per AMCA Standard 301. Values shown are for installation Type A: free inlet fan sone levels. Performance ratings include the effects of screen in the airstream.

©PENN BARRY 2008

Low Contour Centrifugal Roof Exhausters

› LC24BC Dimensional Data



Roof Opening = 25"	Ship WT (LBS) = 385	Max RPM = 1045 (2HP)
Damper Size = 24 3/4"	Galv. Hood = 20 Gauge	Alum. Base = .080

› LC24BC Performance Data

HP	RPM	Tip Speed FPM	0.000" SP		0.125" SP		0.250" SP		0.375" SP		0.500" SP		0.625" SP		0.750" SP		0.875" SP		1.000" SP		1.250" SP			
			Sones	BHP	Sones	BHP	Sones	BHP	Sones	BHP	Sones	BHP	Sones	BHP	Sones	BHP	Sones	BHP	Sones	BHP	Sones	BHP	Sones	BHP
1/4	290	1879	2443		1601		-		-		-		-		-		-		-		-		-	
			4.6	0.06	3.0	0.07	-		-		-		-		-		-		-		-		-	
	315	2041	2654		1951		-		-		-		-		-		-		-		-		-	
			5.4	0.08	4.1	0.09	-		-		-		-		-		-		-		-		-	
	340	2203	2865		2232		-		-		-		-		-		-		-		-		-	
			6.0	0.10	5.0	0.11	-		-		-		-		-		-		-		-		-	
	360	2333	3033		2444		924		-		-		-		-		-		-		-		-	
			7.6	0.14	6.6	0.15	4.7	0.14	-		-		-		-		-		-		-		-	
	380	2462	3202		2652		1728		-		-		-		-		-		-		-		-	
7.6			0.14	6.6	0.15	4.7	0.14	-		-		-		-		-		-		-		-		
409	2592	3370		2856		2107		-		-		-		-		-		-		-		-		
		8.5	0.16	7.5	0.18	5.7	0.17	-		-		-		-		-		-		-		-		
430	2786	3623		3154		2550		-		-		-		-		-		-		-		-		
		10.1	0.20	9.0	0.22	7.4	0.23	-		-		-		-		-		-		-		-		
471	3052	3969		3554		3050		2233		-		-		-		-		-		-		-		
		12.3	0.27	11.1	0.29	9.9	0.30	7.3	0.28	-		-		-		-		-		-		-		
490	3175	4129		3737		3254		2582		-		-		-		-		-		-		-		
		12.9	0.30	11.7	0.32	10.5	0.33	8.3	0.32	-		-		-		-		-		-		-		
507	3285	4272		3900		3434		2843		-		-		-		-		-		-		-		
		13.4	0.33	12.1	0.35	10.8	0.37	9.1	0.36	-		-		-		-		-		-		-		
1/2	530	3434	4466		4119		3675		3169		2274		-		-		-		-		-			
			13.9	0.38	12.7	0.40	11.3	0.42	9.9	0.42	8.2	0.38	-		-		-		-		-			
	550	3564	4634		4307		3881		3439		2702		-		-		-		-		-			
14.6			0.42	13.3	0.45	11.9	0.47	10.6	0.48	8.9	0.45	-		-		-		-		-				
583	3778	4912		4598		4212		3802		3247		2155		-		-		-		-		-		
		15.6	0.51	14.2	0.53	12.8	0.55	11.4	0.57	10.2	0.55	9.1	0.46	-		-		-		-				
3/4	610	3953	5140		4836		4480		4090		3632		2923		-		-		-		-			
			16.3	0.58	14.9	0.60	13.5	0.63	12.1	0.64	11.1	0.64	9.9	0.61	-		-		-		-			
	640	4147	5393		5098		4773		4406		4030		3456		2423		-		-		-			
			17.2	0.67	15.6	0.69	14.2	0.72	12.9	0.74	11.9	0.75	11.0	0.72	10.2	0.61	-		-		-			
655	4244	5519		5229		4919		4562		4194		3677		2926		-		-		-				
		17.7	0.72	16.0	0.74	14.7	0.77	13.3	0.79	12.3	0.81	11.6	0.78	10.7	0.73	-		-		-				
671	4348	5654		5368		5073		4726		4367		3910		3260		-		-		-				
		18.3	0.77	16.5	0.80	15.1	0.83	13.8	0.85	12.7	0.86	12.1	0.85	11.3	0.81	-		-		-				
1	680	4406	5730		5446		5160		4818		4464		4034		3424		2059		-		-			
			18.6	0.80	16.9	0.83	15.4	0.86	14.1	0.88	13.0	0.90	12.4	0.89	11.6	0.85	11.1	0.64	-		-			
	700	4536	5898		5620		5352		5019		4677		4305		3770		2964		-		-			
19.5			0.88	17.6	0.90	16.1	0.93	14.8	0.96	13.7	0.97	13.2	0.98	12.5	0.94	12.0	0.86	-		-				
719	4659	6058		5784		5534		5209		4878		4544		4050		3402		1798		-				
		20.0	0.95	18.1	0.97	16.6	1.01	15.4	1.03	14.4	1.05	13.8	1.07	13.3	1.04	12.7	0.99	12.2	0.69	-				
1 1/2	745	4827	6278		6009		5782		5466		5150		4827		4420		3884		3037		-			
			21.0	1.06	18.9	1.08	17.6	1.12	16.3	1.15	15.3	1.17	14.7	1.18	14.2	1.17	13.6	1.13	13.1	1.01	-			
	780	5054	6573		6310		6110		5809		5511		5201		4893		4424		3861		-			
22.0			1.21	20.0	1.24	19.0	1.28	17.6	1.31	16.7	1.33	16.0	1.35	15.6	1.36	15.0	1.33	14.3	1.28	-				
826	5352	6960		6705		6517		6253		5972		5685		5394		5064		4615		3118				
		24.0	1.44	22.0	1.46	21.0	1.51	19.6	1.54	18.5	1.57	17.9	1.59	17.4	1.61	17.0	1.61	16.3	1.57	15.3	1.31			
2	860	5572	7247		6997		6815		6581		6309		6038		5756		5478		5101		4079			
			25.0	1.62	24.0	1.65	23.0	1.69	21.0	1.73	20.0	1.76	19.2	1.79	18.8	1.81	18.4	1.82	17.9	1.80	16.6	1.69		
	880	5702	7415		7171		6990		6773		6505		6242		5968		5695		5372		4458			
26.0			1.74	25.0	1.77	24.0	1.81	23.0	1.85	21.0	1.88	20.0	1.91	19.5	1.93	19.3	1.95	18.8	1.95	17.5	1.85			
911	5903	7676		7441		7261		7068		6808		6553		6292		6027		5765		4975				
		28.0	1.93	26.0	1.96	25.0	2.00	24.0	2.04	23.0	2.08	22.0	2.11	21.0	2.13	20.0	2.15	20.0	2.17	18.9	2.09			

Performance shown is for installation type A: Free Inlet, Free Outlet. Power rating (BHP) does not include drive losses. Selection software automatically calculates drive losses when selecting equipment. The sound ratings shown are for loudness values in fan sones at 5'0" (1.5m) in a hemispherical free field per AMCA Standard 301. Values shown are for installation Type A: free inlet fan sone levels. Performance ratings include the effects of screen in the airstream.

Low Contour Centrifugal Roof Exhausters

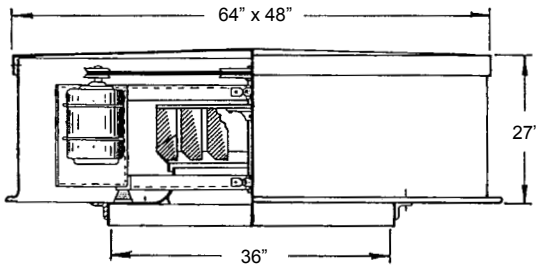
Dimensional Information & Performance Data

LC Dynafan | Belt Drive



LC30BC

LC30BC Dimensional Data



Roof Opening = 28"	Ship WT (LBS) = 520	Max RPM = 788 (3 HP)
Damper Size = 30 1/2"	Galv. Hood = 20 Gauge	Alum. Base = .100

LC30BC Performance Data

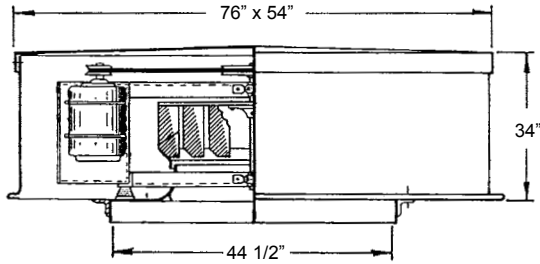
HP	RPM	Tip Speed FPM	0.000" SP		0.125" SP		0.250" SP		0.375" SP		0.500" SP		0.625" SP		0.750" SP		0.875" SP		1.000" SP		1.250" SP					
			Sones	BHP	Sones	BHP	Sones	BHP	Sones	BHP	Sones	BHP	Sones	BHP	Sones	BHP	Sones	BHP	Sones	BHP	Sones	BHP				
1/3	250	1996	3541		2480		-		-		-		-		-		-		-		-					
			4.3	0.09	3.7	0.10	-		-		-		-		-		-		-		-					
	275	2196	3895		2977		-		-		-		-		-		-		-		-		-			
			5.3	0.12	4.6	0.14	-		-		-		-		-		-		-		-		-			
	300	2395	4250		3453		1695		-		-		-		-		-		-		-		-			
			6.3	0.16	5.6	0.18	5.3	0.14	-		-		-		-		-		-		-		-			
	340	2715	4816		4134		3194		-		-		-		-		-		-		-		-			
7.9			0.23	7.3	0.26	6.7	0.26	-		-		-		-		-		-		-		-				
360	2875	5100		4468		3637		1515		-		-		-		-		-		-		-				
		8.9	0.28	8.2	0.30	7.5	0.31	7.3	0.21	-		-		-		-		-		-		-				
382	3050	5411		4829		4073		2879		-		-		-		-		-		-		-				
		9.9	0.33	9.1	0.36	8.5	0.37	8.1	0.34	-		-		-		-		-		-		-				
1/2	400	3194	5666		5118		4427		3483		-		-		-		-		-		-		-			
			10.9	0.38	9.9	0.41	9.3	0.43	8.8	0.42	-		-		-		-		-		-		-			
	420	3354	5950		5425		4809		3996		2076		-		-		-		-		-		-			
			12.0	0.44	10.8	0.47	10.2	0.49	9.7	0.49	8.7	0.36	-		-		-		-		-		-			
440	3513	6233		5730		5155		4436		3282		-		-		-		-		-		-				
		13.3	0.51	11.8	0.54	11.2	0.56	10.7	0.57	10.1	0.52	-		-		-		-		-		-				
3/4	460	3673	6516		6032		5495		4834		3965		-		-		-		-		-		-			
			14.4	0.58	12.8	0.61	12.2	0.64	11.8	0.65	11.4	0.63	-		-		-		-		-		-			
	480	3833	6800		6333		5832		5229		4497		3101		-		-		-		-		-			
15.7			0.66	14.0	0.70	13.2	0.72	12.9	0.74	12.5	0.73	11.2	0.63	-		-		-		-		-				
506	4040	7168		6722		6267		5734		5081		4181		1904		-		-		-		-				
		17.0	0.77	15.3	0.81	14.4	0.84	14.2	0.86	13.8	0.87	13.3	0.83	10.6	0.54	-		-		-		-				
1	520	4152	7366		6931		6498		5987		5361		4604		2964		-		-		-		-			
			17.3	0.84	15.8	0.88	14.9	0.91	14.6	0.93	14.1	0.94	13.6	0.92	11.9	0.74	-		-		-		-			
542	4328	7678		7259		6859		6367		5795		5154		4142		-		-		-		-		-		
		18.0	0.95	16.7	1.00	15.7	1.02	15.2	1.05	14.7	1.06	14.1	1.06	13.4	0.99	-		-		-		-		-		
1 1/2	570	4551	8075		7676		7305		6842		6345		5767		5055		3821		-		-		-			
			19.2	1.10	18.1	1.15	17.2	1.18	16.3	1.21	15.6	1.23	14.9	1.24	14.3	1.22	13.5	1.08	-		-		-		-	
	590	4711	8358		7973		7612		7179		6731		6165		5558		4653		2635		-		-		-	
			19.9	1.22	18.9	1.27	18.1	1.31	17.1	1.34	16.3	1.36	15.6	1.37	14.9	1.37	14.5	1.29	13.3	0.94	-		-		-	
	600	4791	8500		8121		7765		7347		6906		6362		5793		4986		3390		-		-		-	
20.0			1.29	19.3	1.34	18.5	1.37	17.5	1.40	16.7	1.43	15.9	1.44	15.2	1.44	14.9	1.39	14.1	1.13	-		-		-		
623	4975	8826		8461		8115		7730		7303		6816		6289		5663		4670		-		-		-		
		21.0	1.44	20.0	1.49	19.4	1.53	18.6	1.56	17.8	1.59	16.9	1.61	16.2	1.62	15.7	1.60	15.4	1.49	-		-		-		
2	640	5110	9067		8711		8372		8010		7593		7147		6629		6068		5287		-		-			
			22.0	1.56	21.0	1.62	20.0	1.66	19.3	1.69	18.5	1.72	17.8	1.74	16.9	1.75	16.3	1.74	16.0	1.68	-		-		-	
	660	5270	9350		9005		8674		8338		7932		7533		7022		6532		5891		2974		-		-	
			23.0	1.71	22.0	1.77	21.0	1.81	20.0	1.84	19.4	1.88	18.8	1.90	17.9	1.92	17.1	1.93	16.8	1.89	15.7	1.32	-		-	
	670	5350	9492		9152		8824		8502		8100		7707		7221		6734		6150		3729		-		-	
23.0			1.79	23.0	1.85	22.0	1.90	21.0	1.93	19.9	1.96	19.3	1.99	18.5	2.01	17.6	2.01	17.2	1.99	16.5	1.56	-		-		
687	5486	9732		9401		9080		8776		8386		8001		7555		7075		6553		4843		-		-		
		24.0	1.93	23.0	1.99	23.0	2.04	22.0	2.07	21.0	2.11	20.0	2.14	19.4	2.16	18.5	2.17	17.8	2.16	17.7	1.94	-		-		
3	700	5589	9917		9592		9274		8976		8603		8224		7808		7332		6857		5358		-		-	
			25.0	2.04	24.0	2.10	23.0	2.16	22.0	2.19	22.0	2.22	21.0	2.25	20.0	2.28	19.2	2.29	18.4	2.29	18.2	2.13	-		-	
	720	5749	10200		9884		9573		9283		8936		8565		8194		7726		7275		6047		-		-	
			26.0	2.22	25.0	2.29	24.0	2.34	24.0	2.38	23.0	2.41	22.0	2.44	21.0	2.47	20.0	2.49	19.4	2.50	18.8	2.40	-		-	
740	5909	10483		10176		9870		9588		9266		8903		8547		8120		7674		6649		-		-		
		27.0	2.41	26.0	2.48	25.0	2.54	24.0	2.57	24.0	2.61	23.0	2.64	22.0	2.68	21.0	2.70	20.0	2.71	19.4	2.67	-		-		
787	6284	11149		10860		10571		10271		9934		9592		9254		8919		8584		7769		-		-		
		29.0	2.90	28.0	2.97	27.0	3.04	27.0	3.08	26.0	3.12	25.0	3.16	24.0	3.19	24.0	3.23	23.0	3.24	21.0	3.26	-		-		

Performance shown is for installation type A: Free Inlet, Free Outlet. Power rating (BHP) does not include drive losses. Selection software automatically calculates drive losses when selecting equipment. The sound ratings shown are for loudness values in fan sonas at 5'0" (1.5m) in a hemispherical free field per AMCA Standard 301. Values shown are for installation Type A: free inlet fan sone levels. Performance ratings include the effects of screen in the airstream.

©PENN BARRY 2008

Low Contour Centrifugal Roof Exhausters

› LC40BC Dimensional Data



Roof Opening = 36"	Ship WT (LBS) = 675	Max RPM = 779 (5 HP)
Damper Size = 35 1/2"	Galv. Hood = 20 Gauge	Alum. Base = .102

› LC40BC Performance Data

HP	RPM	Tip Speed FPM	0.000" SP		0.125" SP		0.250" SP		0.375" SP		0.500" SP		0.625" SP		0.750" SP		0.875" SP		1.000" SP		1.250" SP	
			Sones	BHP	Sones	BHP	Sones	BHP	Sones	BHP	Sones	BHP	Sones	BHP	Sones	BHP	Sones	BHP	Sones	BHP	Sones	BHP
1/2	210	2044	5417		3705		-		-		-		-		-		-		-		-	
			3.9	0.13	2.4	0.16	-		-		-		-		-		-		-		-	
	230	2239	5933		4392		-		-		-		-		-		-		-		-	
			4.9	0.17	3.3	0.21	-		-		-		-		-		-		-		-	
	250	2434	6449		5057		1935		-		-		-		-		-		-		-	
			5.9	0.22	4.3	0.27	3.8	0.19	-		-		-		-		-		-		-	
	270	2629	6965		5687		4046		-		-		-		-		-		-		-	
		6.8	0.28	5.3	0.33	4.5	0.34	-		-		-		-		-		-		-		
1	290	2823	7481		6283		4945		-		-		-		-		-		-		-	
			7.8	0.35	6.3	0.40	5.2	0.42	-		-		-		-		-		-		-	
	319	3106	8229		7133		6001		4174		-		-		-		-		-		-	
		9.4	0.46	7.7	0.52	6.6	0.57	6.2	0.53	-		-		-		-		-		-		
3/4	330	3213	8513		7458		6371		4915		-		-		-		-		-		-	
			10.0	0.51	8.2	0.57	7.1	0.62	6.6	0.62	-		-		-		-		-		-	
	350	3407	9029		8044		7035		5835		-		-		-		-		-		-	
			11.2	0.61	9.2	0.68	8.2	0.73	7.4	0.74	-		-		-		-		-		-	
1	367	3573	9467		8535		7588		6537		4666		-		-		-		-		-	
			12.2	0.70	10.2	0.77	9.0	0.83	8.2	0.86	7.7	0.80	-		-		-		-		-	
1 1/2	385	3748	9932		9051		8137		7157		5903		-		-		-		-		-	
			13.4	0.81	11.3	0.88	9.9	0.95	9.3	0.99	8.6	0.98	-		-		-		-		-	
	393	3826	10138		9279		8377		7427		6255		-		-		-		-		-	
			14.0	0.86	11.8	0.94	10.3	1.00	9.8	1.06	9.0	1.05	-		-		-		-		-	
2	420	4089	10835		10043		9176		8331		7411		5983		-		-		-		-	
			15.8	1.05	13.6	1.14	11.6	1.21	11.3	1.27	10.7	1.30	9.6	1.26	-		-		-		-	
	435	4235	11222		10464		9614		8824		7937		6801		3672		-		-		-	
		16.4	1.17	14.4	1.26	12.4	1.34	12.1	1.40	11.7	1.44	10.7	1.42	9.7	1.05	-		-		-		
3	452	4400	11660		10938		10114		9375		8516		7539		6000		-		-		-	
			17.2	1.31	15.3	1.41	13.5	1.49	13.0	1.55	12.8	1.61	11.9	1.60	10.9	1.54	-		-		-	
	470	4576	12124		11438		10645		9921		9122		8303		7148		3990		-		-	
			18.2	1.48	16.4	1.58	14.7	1.66	14.0	1.73	13.8	1.79	13.2	1.82	12.2	1.78	11.2	1.32	-		-	
	480	4673	12382		11715		10939		10220		9455		8655		7602		5547		-		-	
		18.8	1.57	17.1	1.68	15.4	1.76	14.6	1.83	14.4	1.90	13.9	1.93	13.0	1.91	12.0	1.66	-		-		
5	498	4848	12847		12212		11463		10755		10049		9272		8381		7142		-		-	
			19.9	1.76	18.4	1.88	16.7	1.95	15.7	2.03	15.5	2.10	15.3	2.15	14.4	2.15	13.3	2.10	-		-	
	520	5062	13414		12816		12099		11402		10763		10015		9280		8279		6711		-	
			22.0	2.00	20.0	2.13	18.3	2.20	17.0	2.29	16.9	2.36	16.7	2.44	16.2	2.46	15.2	2.43	14.3	2.29	-	
	540	5257	13930		13360		12673		11985		11374		10682		9969		9143		8093		-	
			23.0	2.24	21.0	2.38	19.6	2.44	18.3	2.55	18.1	2.62	18.0	2.70	17.7	2.75	16.9	2.74	15.9	2.70	-	
	555	5403	14317		13762		13101		12429		11824		11177		10478		9778		8811		-	
		24.0	2.43	22.0	2.58	21.0	2.64	19.4	2.75	18.9	2.83	18.8	2.91	18.7	2.98	18.1	2.99	17.2	2.95	-		
5	572	5569	14756		14217		13583		12931		12329		11731		11050		10381		9548		6400	
			25.0	2.66	23.0	2.81	22.0	2.89	21.0	2.99	20.0	3.08	19.9	3.16	19.8	3.24	19.3	3.27	18.6	3.25	16.6	2.75
	600	5841	15478		14965		14372		13751		13154		12604		11981		11335		10700		8824	
			27.0	3.08	25.0	3.23	24.0	3.32	23.0	3.41	22.0	3.52	22.0	3.60	22.0	3.69	22.0	3.76	21.0	3.78	19.2	3.69
	620	6036	15994		15497		14933		14332		13736		13204		12636		12008		11390		9829	
		29.0	3.39	27.0	3.55	26.0	3.65	25.0	3.74	24.0	3.86	23.0	3.95	23.0	4.03	23.0	4.12	23.0	4.16	21.0	4.11	
5	640	6231	16510		16029		15491		14909		14326		13799		13283		12675		12070		10696	
			31.0	3.73	29.0	3.90	28.0	4.01	26.0	4.09	25.0	4.22	25.0	4.31	25.0	4.40	25.0	4.49	25.0	4.56	23.0	4.56
	679	6610	17516		17063		16573		16024		15475		14945		14459		13951		13378		12246	
		35.0	4.46	33.0	4.63	32.0	4.77	30.0	4.84	29.0	4.97	28.0	5.09	28.0	5.18	28.0	5.28	28.0	5.37	27.0	5.47	

Performance shown is for installation type A: Free Inlet, Free Outlet. Power rating (BHP) does not include drive losses. Selection software automatically calculates drive losses when selecting equipment. The sound ratings shown are for loudness values in fan sonas at 50' (1.5m) in a hemispherical free field per AMCA Standard 301. Values shown are for installation Type A: free inlet fan sone levels. Performance ratings include the effects of screen in the airstream.

Low Contour Centrifugal Roof Exhausters

LC Dynafan

Configurations

Low Contour Centrifugal Roof Exhausters

› Model

LC

› Unit Size

06	20	30
12	24	40

› Drive Type

D = Direct Drive B = Belt Drive

› Motor Tap

VC
RC
SC

› Motor Speed

1 = Single Speed
2 = 2S2W Single & Three Phase
3 = 2S1W Three Phase

› Horse Power

1/7	1/4	1/3	1/2	3/4
1	1 1/2	2	3	5

› Enclosure

O = Open Drip Proof
T = Totally Enclosed
E = Explosion Proof
X = Special

› Voltage

A = 110V	G = 230V	N = 440V
B = 115V	H = 240V	P = 460V
C = 120V	J = 277V	Q = 480V
D = 200V	K = 380V	R = 575V
E = 208V	L = 400V	S = 600V
F = 220V	M = 415V	

› Phase

1 = Single 3 = Three

› Cycle

5 = 50 Hz 6 = 60 Hz

› Efficiency

S = Standard H = High Efficiency

› Paint / Coating

0 = None
F = Epoxy Powder Coat*
G = Epoxy Powder Coat with UV*
H = Hi-Temp Powder Coat*
J = Non-stick Powder Coat*
K = Phenolic Powder Coat*
L = Phenolic Powder Coat with UV*
N = Polyester Powder Coat
X = Special
* Not available with choice of color.

› Color

0 = None
50 = Chrome Green
53 = Williamsburg Blue
55 = Pale Green
56 = Dove Gray
61 = White
63 = Oxford Beige
65 = Dover White
66 = Desert Tan
70 = Black
73 = Smoke Gray
77 = Brick Red
79 = Peppercorn
81 = Pale Brown
83 = Chocolate Brown
85 = Timeless Bronze
94 = Charcoal
X = Special

› Damper

0 = None
BDD = Gravity Backdraft Damper
MD1 = Motor Operated Damper
110V / 115V / 120V
MD2 = Motor Operated Damper
208V / 230V
MD4 = Motor Operated Damper
440V / 460V / 480V

› Roof Curb

0 = None	K = UCA18	V = UG18
A = UCG8	L = UG12	W = URA12
B = UCG12	M = SA16	Y = URA18
C = UCG18	N = SFG12	1 = URG12
D = UCA8	P = SFG18	10 = SFA8
E = UCA12	Q = SG16	11 = USCG
F = SFA12	R = SRA16	12 = USCA
G = SFA18	S = SRG16	2 = URG18
H = SCG16	T = UA12	4 = UVA18
J = SCA16	U = UA18	5 = UVG18

› Aluminum Housing

0 = None
B = Bird Screen
S = Insect/Bird Screen

› Bird Insect Screen

0 = None
A = Aluminum Housing

› Roof Pitch

0 = None
S = Single Slope
D = Double Sloped

› Metal Liner

0 = None
L = Metal Liner

› Damper Holding Plate

0 = None
P = Damper Holding Plate

› Neoprene Gasket

0 = None
G = Gasket

› No Wooden Nailer

0 = None
N = No Wooden Nailer

› Curb Paint/Coating

0 = None
B = Air Dried Epoxy
Q = Enamel

› Hinged Sub-base

0 = None
H = Hinged Sub-base

› Galvanized Pedestal

0 = None
G = Galvanized Pedestal

› Anti-Vandal Collar

0 = None
C = Anti-Vandal Collar

› Burglar Bars

0 = None
B = Burglar Bars

› Thermal Overload Protection

0 = None
P = Thermal Overload Protection

› Disconnect Switch

0 = None
1 = Nema 1 Disconnect Switch
3R = Nema 3R Disconnect Switch
4 = Nema 4 Disconnect Switch
9 = Nema 9 Disconnect Switch

› Internal Wiring

0 = None
1 = Nema 1 Internal Wiring
3R = Nema 3R Internal Wiring

› Transformer

0 = None
T = Transformer

› Speed Controller

0 = None
L = Loose
M = Mounted

› Firestat Switch

0 = None
F = Firestat Switch

› Direct Drive Units

Direct drive centrifugal low contour roof exhaust fan shall be LC Dynafan LC, manufactured by PennBarry, Richardson, TX 75081.

The housing shall be a low contour design, weatherproof, utilize heavy-gauge galvanized (aluminum optional) hood, with rigid galvanized steel internal support structures. Units shall be equipped with an oversized electrical conduit chase through the curb cap and into the motor compartment for ease of wiring (except explosion proof). Units shall be prewired to a junction box mounted in the motor compartment and equipped with an electrical disconnect device (except explosion proof).

Statically and dynamically balanced backward inclined, centrifugal wheels shall be aluminum, spark-resistant, non-overloading, and matched to deeply spun venturis. Motors shall be continuous duty, permanently lubricated, multi-speed (for applicable models), have thermal overload protection, positively cooled, be easily accessible for service, and furnished at the specified voltage, phase.

Each fan shall bear the AMCA Licensed Ratings Seal for Air and Sound Performance, and shall be UL and CSA listed.

› Belt Drive Units

Belt driven centrifugal low contour roof exhaust fan shall be LC Dynafan LC, manufactured by PennBarry, Richardson, TX 75081.

The housing shall be a low contour design, weatherproof, utilize heavy-gauge galvanized (aluminum optional) hood, with rigid galvanized steel internal support structures. Units shall be equipped with an oversized electrical conduit chase through the curb cap and into the motor compartment for ease of wiring (except explosion proof). Units shall be prewired to a junction box mounted in the motor compartment and equipped with an electrical disconnect device (except explosion proof).

Statically and dynamically balanced backward inclined, centrifugal wheels shall be aluminum, spark-resistant, non-overloading, and matched to deeply spun venturis. Motors shall be continuous duty, ball bearing design, permanently lubricated, mounted out of the airstream, and furnished at the specified voltage, phase, and enclosure. Shafts shall be turned, ground and polished. Heavy duty ball bearings are rated for a minimum L50 life exceeding 200,000 hours. Pulleys shall be adjustable, cast iron, machined, keyed, securely attached, & sized for 150% of the horsepower at its rated maximum speed.

Each fan shall bear the AMCA Licensed Ratings Seal for Air and Sound Performance, and shall be UL and CSA listed.

1-Year Limited Manufacturer Warranty

› Products Covered

PennBarry Fans and Ventilators (each, a “PennBarry Product”)

› One Year Limited Warranty For PennBarry Products

PennBarry warrants to the original commercial purchaser that the PennBarry Products will be free from defects in material and workmanship for a period of one (1) year from the date of shipment.

› Exclusive Remedy

PennBarry will, at its option, repair or replace (without removal or installation) the affected components of any defective PennBarry Product; repair or replace (without removal or installation) the entire defective PennBarry Product; or refund the invoice price of the PennBarry Product. In all cases, a reasonable time period must be allowed for warranty repairs to be completed.

› What You Must Do

In order to make a claim under these warranties:

- You must be the original commercial purchaser of the PennBarry Product.
- You must promptly notify us, within the warranty period, of any defect and provide us with any substantiation that we may reasonably request.
- The PennBarry Product must have been installed and maintained in accordance with good industry practice and any specific PennBarry recommendations.

› Exclusions

These warranties do not cover defects caused by:

- Improper design or operation of the system into which the PennBarry Product is incorporated.
- Improper installation.
- Accident, abuse or misuse.
- Unreasonable use (including any use for non-commercial purposes, failure to provide reasonable and necessary maintenance as specified by PennBarry, misapplication and operation in excess of stated performance characteristics).
- Components not manufactured by PennBarry.

› Limitations

- In all cases, PennBarry reserves the right to fully satisfy its obligations under the Limited Warranties by refunding the invoice price of the defective PennBarry Product (or, if the PennBarry Product has been discontinued, of the most nearly comparable current product).
- PennBarry reserves the right to furnish a substitute or replacement component or product in the event a PennBarry Product or any component of the product is discontinued or otherwise unavailable.
- PennBarry’s only obligation with respect to components not manufactured by PennBarry shall be to pass through the warranty made by the manufacturer of the defective component.

› General

The foregoing warranties are exclusive and in lieu of all other warranties except that of title, whether written, oral or implied, in fact or in law (including any warranty of merchantability or fitness for a particular purpose).

PennBarry hereby disclaims any liability for special, punitive, indirect, incidental or consequential damages, including without limitation lost profits or revenues, loss of use of equipment, cost of capital, cost of substitute products, facilities or services, downtime, shutdown or slowdown costs.

The remedies of the original commercial purchaser set forth herein are exclusive and the liability of PennBarry with respect to the PennBarry Products, whether in contract, tort, warranty, strict liability or other legal theory shall not exceed the invoice price charged by PennBarry to its customer for the affected PennBarry Product at the time the claim is made.

Inquiries regarding these warranties should be sent to: PennBarry, 1401 North Plano Road, Richardson, TX 75081

Other PennBarry Products

Centrifugal Products



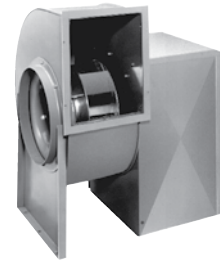
› **Domex**
Centrifugal
Roof Exhausters



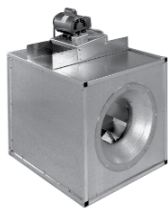
› **Fumex Fatrap**
Kitchen Hood Centrifugal
Roof Exhausters



› **Zephyr**
Ceiling and Inline Fans



› **Dynamo**
Centrifugal Blowers



› **Centrex Inliner**
Centrifugal Inline Fan



› **LC Dynafan**
Low Contour Centrifugal
Roof Exhausters

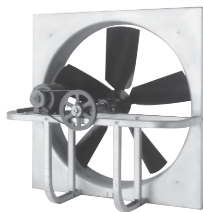


› **ESI**
Efficient Silent
Inline Fan



› **Fume Exhaust**
Curb Mounted
Centrifugal Fans

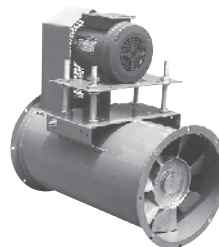
Axial / Gravity Products



› **Breezeway**
Propeller Wall Fan



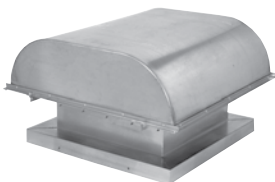
› **Hi-Ex**
Power Roof Ventilator



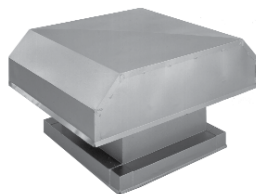
› **Tubeaxial**
Inline Fans



› **Vaneaxial**
Inline Fans



› **Powered Airette**
Axial Roof Ventilators



› **Airette**
Gravity Intake/Relief Hood



› **Domex Axial**
Axial Roof Ventilators



› **Axcentrix**
Bifurcator Fan

