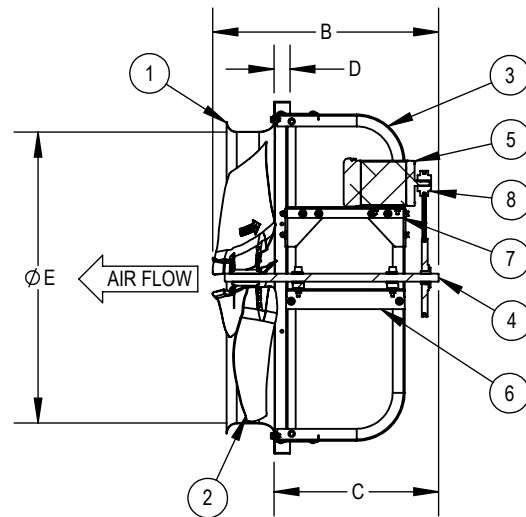
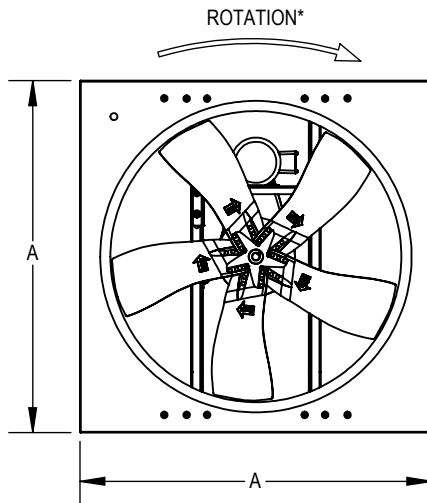


## LWP LP PROPELLER MODELS 20 THRU 60 (EXHAUST)



\*CORRECT ROTATION IS CCW WHEN VIEWING FROM INLET SIDE.

ALL DIMENSIONS IN INCHES.

### DIMENSIONAL DATA

| MODEL | A     | B max | C     | D    | E     | LESS MOTOR/DRIVE WEIGHT (lbs) |
|-------|-------|-------|-------|------|-------|-------------------------------|
| 20    | 26.00 | 21.13 | 16.38 | 2.00 | 20.25 | 56                            |
| 24    | 32.00 | 22.00 | 16.38 | 2.00 | 24.30 | 66                            |
| 30    | 38.00 | 26.38 | 20.25 | 2.00 | 30.31 | 95                            |
| 36    | 44.00 | 27.63 | 19.75 | 2.00 | 36.38 | 110                           |
| 42    | 50.00 | 28.88 | 19.75 | 2.00 | 42.44 | 142                           |
| 48    | 56.00 | 31.25 | 21.00 | 2.00 | 48.50 | 172                           |
| 54    | 62.00 | 34.00 | 22.63 | 2.00 | 56.56 | 220                           |
| 60    | 68.00 | 35.75 | 22.88 | 2.00 | 60.38 | 260                           |

### LEGEND

- |                          |                          |                        |
|--------------------------|--------------------------|------------------------|
| 1 VENTURI PANEL          | 4 DRIVE SHAFT & BEARING  | 7 MOTOR MOUNTING PLATE |
| 2 LOW PRESSURE PROPELLER | 5 MOTORS                 | 8 MOTOR & FAN PULLEY   |
| 3 STRUCTURE ASSEMBLY     | 6 BEARING MOUNTING PLATE |                        |

### FEATURES

- Galvanized Steel Construction
- AMCA certified Air and Sound Performance.
- Exhaust or Supply applications.
- All propellers statically and dynamically balanced.
- Complies with AMCA Standard 204-96.
- UL 705 Certified

### OPTIONS

- 45 Degree Weather Hood
- 90 Degree Weather Hood
- Wall Sleeve
- Damper Guard
- Wall Collar
- Filter Box
- Slip in Fan Pack
- Dampers
- Safety Service Switch
- Transformers

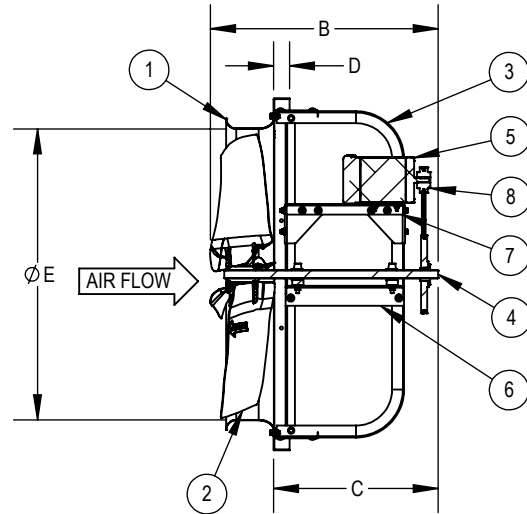
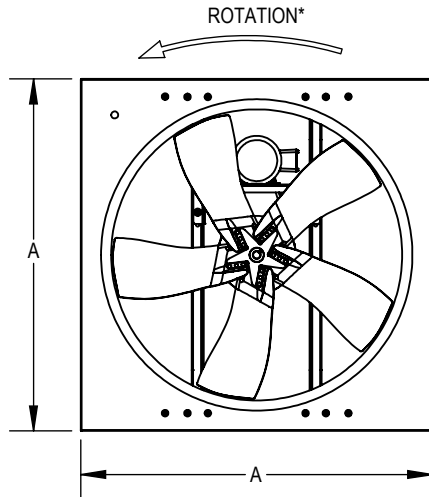
REVISION: \_\_\_\_\_

FORM: \_\_\_\_\_

REPLACES: \_\_\_\_\_

## LWP

### LP PROPELLER MODELS 20 THRU 60 (SUPPLY)



\*CORRECT ROTATION IS CCW WHEN VIEWING FROM INLET SIDE.

ALL DIMENSIONS IN INCHES.

#### DIMENSIONAL DATA

| MODEL | A     | B max | C     | D    | E     | LESS MOTOR/DRIVE WEIGHT (lbs) |
|-------|-------|-------|-------|------|-------|-------------------------------|
| 20    | 26.00 | 21.13 | 16.38 | 2.00 | 20.25 | 56                            |
| 24    | 32.00 | 22.00 | 16.38 | 2.00 | 24.30 | 66                            |
| 30    | 38.00 | 26.38 | 20.25 | 2.00 | 30.31 | 95                            |
| 36    | 44.00 | 27.63 | 19.75 | 2.00 | 36.38 | 110                           |
| 42    | 50.00 | 28.88 | 19.75 | 2.00 | 42.44 | 142                           |
| 48    | 56.00 | 31.25 | 21.00 | 2.00 | 48.50 | 172                           |
| 54    | 62.00 | 34.00 | 22.63 | 2.00 | 56.56 | 220                           |
| 60    | 68.00 | 35.75 | 22.88 | 2.00 | 60.38 | 260                           |

#### LEGEND

- |                          |                          |                        |
|--------------------------|--------------------------|------------------------|
| 1 VENTURI PANEL          | 4 DRIVE SHAFT & BEARING  | 7 MOTOR MOUNTING PLATE |
| 2 LOW PRESSURE PROPELLER | 5 MOTORS                 | 8 MOTOR & FAN PULLEY   |
| 3 STRUCTURE ASSEMBLY     | 6 BEARING MOUNTING PLATE |                        |

#### FEATURES

- Galvanized Steel Construction
- AMCA certified Air and Sound Performance.
- Exhaust or Supply applications.
- All propellers statically and dynamically balanced.
- Complies with AMCA Standard 204-96.
- UL 705 Certified

#### OPTIONS

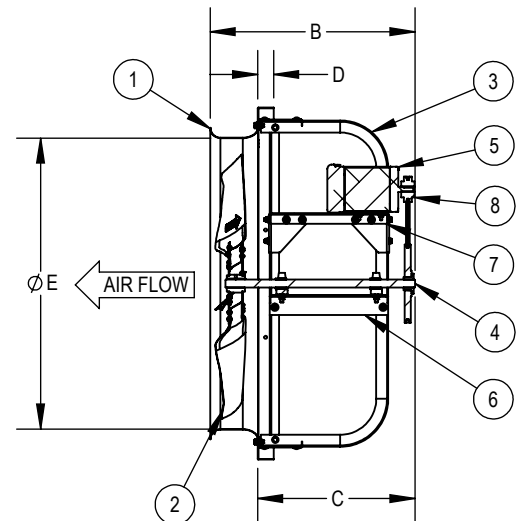
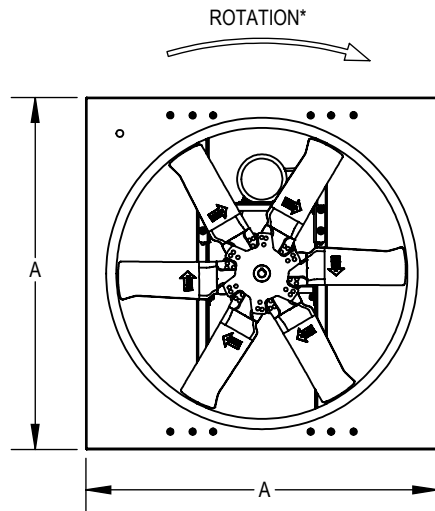
- 45 Degree Weather Hood
- 90 Degree Weather Hood
- Wall Sleeve
- Damper Guard
- Wall Collar
- Filter Box
- Slip in Fan Pack
- Dampers
- Safety Service Switch
- Transformers

REVISION: \_\_\_\_\_

FORM: \_\_\_\_\_

REPLACES: \_\_\_\_\_

## LWP HP PROPELLER MODELS 20 THRU 60 (EXHAUST)



\*CORRECT ROTATION IS CCW WHEN VIEWING FROM INLET SIDE.

ALL DIMENSIONS IN INCHES.

### DIMENSIONAL DATA

| MODEL | A     | B max | C     | D    | E     | LESS MOTOR/DRIVE WEIGHT (lbs) |
|-------|-------|-------|-------|------|-------|-------------------------------|
| 20    | 26.00 | 20.75 | 16.38 | 2.00 | 20.25 | 57                            |
| 24    | 32.00 | 21.25 | 16.38 | 2.00 | 24.30 | 68                            |
| 30    | 38.00 | 25.13 | 20.25 | 2.00 | 30.31 | 93                            |
| 36    | 44.00 | 25.75 | 19.75 | 2.00 | 36.38 | 107                           |
| 42    | 50.00 | 26.63 | 19.75 | 2.00 | 42.44 | 137                           |
| 48    | 56.00 | 29.00 | 21.00 | 2.00 | 48.50 | 164                           |
| 54    | 62.00 | 31.50 | 22.63 | 2.00 | 56.56 | 210                           |
| 60    | 68.00 | 32.88 | 22.88 | 2.00 | 60.38 | 222                           |

### LEGEND

- |                           |                          |                        |
|---------------------------|--------------------------|------------------------|
| 1 VENTURI PANEL           | 4 DRIVE SHAFT & BEARING  | 7 MOTOR MOUNTING PLATE |
| 2 HIGH PRESSURE PROPELLER | 5 MOTORS                 | 8 MOTOR & FAN PULLEY   |
| 3 STRUCTURE ASSEMBLY      | 6 BEARING MOUNTING PLATE |                        |

### FEATURES

- |   |  |
|---|--|
| <ul style="list-style-type: none"> <li>Galvanized Steel Construction</li> <li>AMCA certified Air and Sound Performance.</li> <li>Exhaust or Supply applications.</li> </ul> | <ul style="list-style-type: none"> <li>All propellers statically and dynamically balanced.</li> <li>Complies with AMCA Standard 204-96.</li> <li>UL 705 Certified</li> </ul> |
|---|--|

### OPTIONS

- |  |  |
|--|--|
| <ul style="list-style-type: none"> <li>45 Degree Weather Hood</li> <li>90 Degree Weather Hood</li> <li>Wall Sleeve</li> <li>Damper Guard</li> <li>Wall Collar</li> </ul> | <ul style="list-style-type: none"> <li>Filter Box</li> <li>Slip in Fan Pack</li> <li>Dampers</li> <li>Safety Service Switch</li> <li>Transformers</li> </ul> |
|--|--|

REVISION:

FORM:

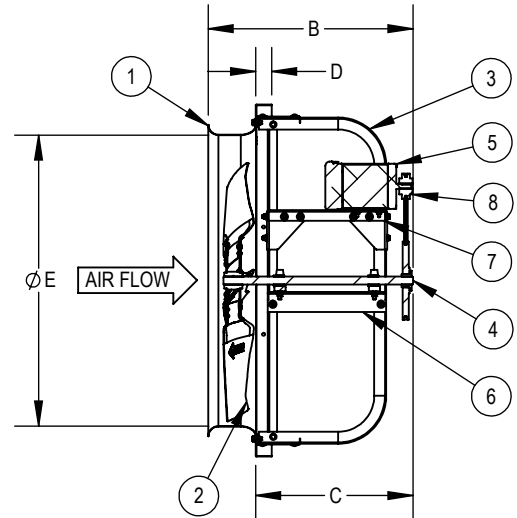
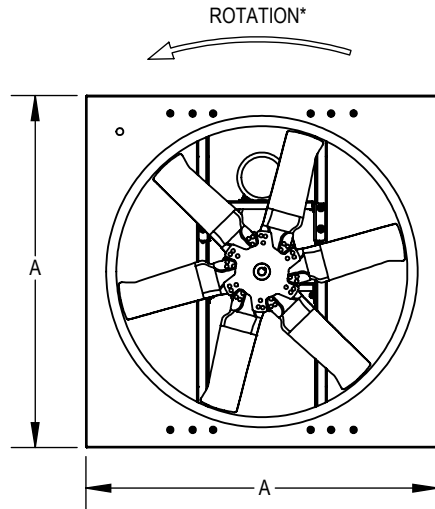
REPLACES:



DATE: TAG:  
 JOB:  
 PROJECT:  
 COMPANY:  
 SALES PERSON:

PRINT DATE: 9/20/2023

LWP  
 HP PROPELLER MODELS 20 THRU 60 (SUPPLY)



\*CORRECT ROTATION IS CCW WHEN VIEWING FROM INLET SIDE.

ALL DIMENSIONS IN INCHES.

**DIMENSIONAL DATA**

| MODEL | A     | B max | C     | D    | E     | LESS MOTOR/DRIVE WEIGHT (lbs) |
|-------|-------|-------|-------|------|-------|-------------------------------|
| 20    | 26.00 | 20.75 | 16.38 | 2.00 | 20.25 | 57                            |
| 24    | 32.00 | 21.25 | 16.38 | 2.00 | 24.30 | 68                            |
| 30    | 38.00 | 25.13 | 20.25 | 2.00 | 30.31 | 93                            |
| 36    | 44.00 | 25.75 | 19.75 | 2.00 | 36.38 | 107                           |
| 42    | 50.00 | 26.63 | 19.75 | 2.00 | 42.44 | 137                           |
| 48    | 56.00 | 29.00 | 21.00 | 2.00 | 48.50 | 164                           |
| 54    | 62.00 | 31.50 | 22.63 | 2.00 | 56.56 | 210                           |
| 60    | 68.00 | 32.88 | 22.88 | 2.00 | 60.38 | 222                           |

**LEGEND**

- |                           |                          |                        |
|---------------------------|--------------------------|------------------------|
| 1 VENTURI PANEL           | 4 DRIVE SHAFT & BEARING  | 7 MOTOR MOUNTING PLATE |
| 2 HIGH PRESSURE PROPELLER | 5 MOTORS                 | 8 MOTOR & FAN PULLEY   |
| 3 STRUCTURE ASSEMBLY      | 6 BEARING MOUNTING PLATE |                        |

**FEATURES**

- Galvanized Steel Construction
- AMCA certified Air and Sound Performance.
- Exhaust or Supply applications.
- All propellers statically and dynamically balanced.
- Complies with AMCA Standard 204-96.
- UL 705 Certified

**OPTIONS**

- 45 Degree Weather Hood
- 90 Degree Weather Hood
- Wall Sleeve
- Damper Guard
- Wall Collar
- Filter Box
- Slip in Fan Pack
- Dampers
- Safety Service Switch
- Transformers

REVISION:

FORM:

REPLACES:

C:\UCI Vault\Penn Barry\Current Products\Axial LWP\_RAU\_RAUMO\_BD\Submittals\LWP\_40879\_LWP