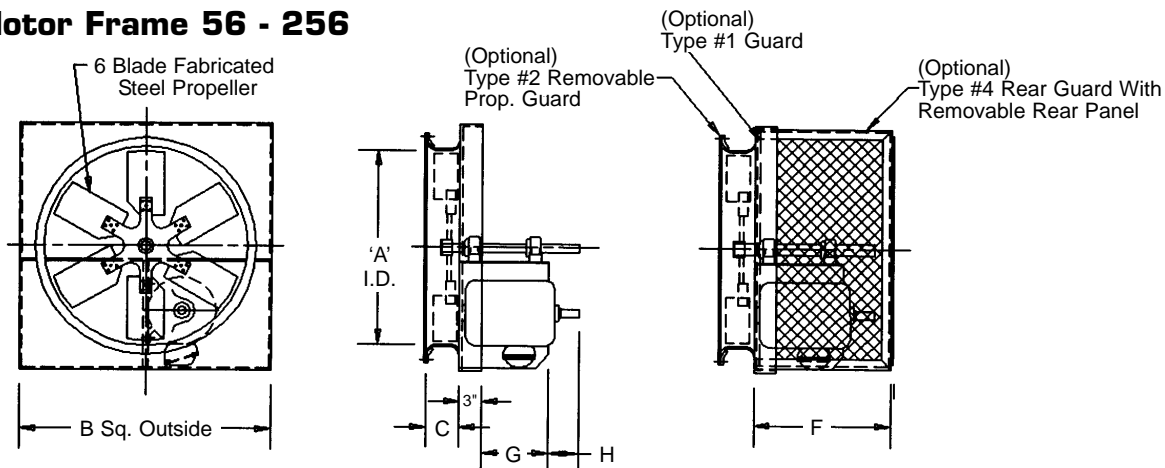


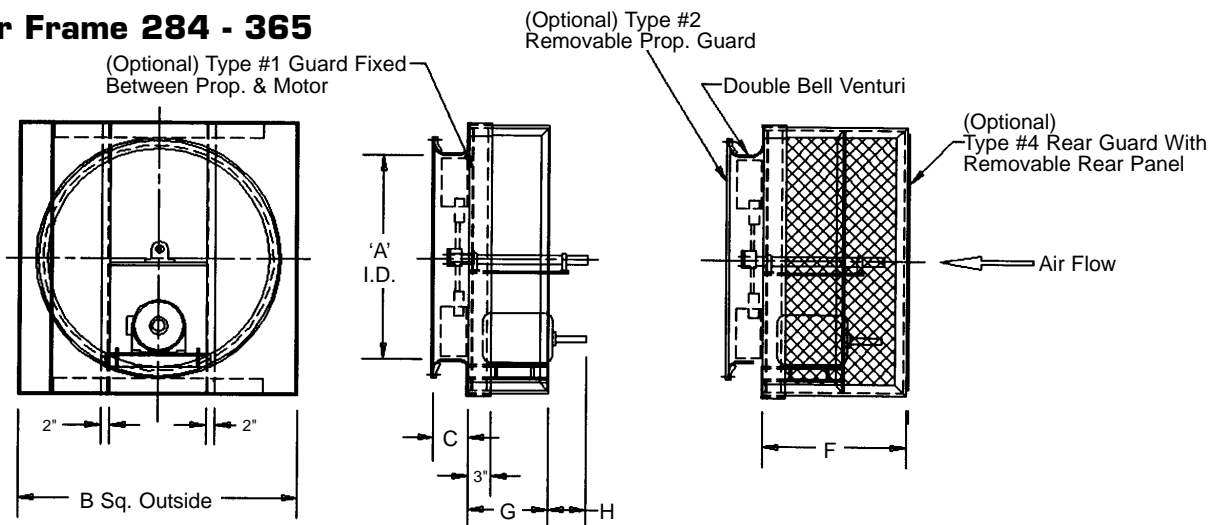
MPB Panel Fan

Belt Drive, Motor Frames 56 - 256 & 284 - 365

Standard Motor Frame 56 - 256



Large Motor Frame 284 - 365



Dimensional Data

Size	A	B	C	Design 1				Design 2				Large Motor Frame				
				F	G	H	Max. Motor	F	G	H	Max. Motor	F	G	H	Max. Motor	
024	24.25	28.00	6.25	18.88	13.00	3.00	184T	—	—	—	—	—	—	—	—	—
027	27.28	34.00	6.25	18.88	13.00	3.00	184T	—	—	—	—	—	—	—	—	—
032	32.34	38.00	7.50	21.88	16.00	3.00	215T	—	—	—	—	—	—	—	—	—
036	36.38	42.00	9.00	21.88	16.00	3.00	215T	—	—	—	—	—	—	—	—	—
042	42.44	48.00	9.75	21.88	16.00	3.00	215T	—	—	—	—	—	—	—	—	—
048	48.50	54.00	9.75	20.88	14.00	4.75	184T	27.88	20	4.75	256T	30.13	26.38	4.75	286T	
054	54.56	60.00	11.75	20.88	14.00	4.75	184T	27.88	20	4.75	256T	33.13	28.38	4.75	286T	
060	60.63	66.00	11.75	20.88	14.00	4.75	184T	27.88	20	4.75	256T	35.88	31	4.75	365T	
072	72.75	78.00	11.75	29.50	20.63	4.75	184T	36	28.38	4.75	256T	40	35.5	4.75	365T	



PENNBARRY™

1401 North Plano Road, Richardson, TX 75081

Ph: 972.234.3202 Fax: 972.497.0468

www.PennBarry.com

Submittal Sheet

MPB Panel Fan

Motor Frames 56 - 256 & 284 - 365

This drawing illustrates our understanding of order requirements. When approved, it represents details for fabrication, as such, PennBarry will not be responsible for revisions in the field or other changes after release for fabrication. Published and protected by PennBarry, Richardson, TX. All rights reserved. May not be reproduced partially or in full without permission from the publisher. No rights conveyed to manufacture partially or in full, use or sell either the method of construction represented or any invention in any way related thereto.

Form ES-MPB-BD1

Revised March 2005