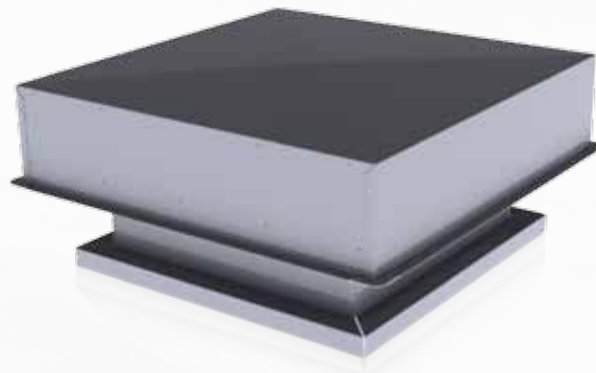




Bulletin AEG11



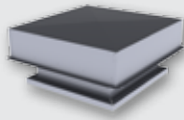
GRAVITY AIRETTE

Models: AEG
Gravity Ventilator
Intake/Relief

› Gravity Ventilator

Model: AEG

- Standard throat sizes up to 72" x 72"



Introduction	4
Dimensional Information & Performance Data	5
Engineering Specifications	9
Limited Warranty	10

PennBarry reserves the right to make changes at any time, without notice, to models, construction, specifications, options, availability, etc. This bulletin illustrates the appearance of PennBarry products at the time of publication. To view the latest updates, visit PennBarry at www.pennbarry.com.

Introduction

Airette Gravity Ventilator



Introduction



AEG shown.

Features & Benefits

- Broad Range of Sizes
- Intake or Relief Application
- Weather-Tight Construction
- Galvanized or Aluminum Construction
- Easy Installation
- Reliable Operation
- Reduced Pressure Losses
- Attractive Appearance

› Standard Construction

Construction includes heavy gauge aluminum or galvanized break-formed hoods with corner stiffener angles. Hoods are mechanically fastened to the throat. The airshaft is aluminum or galvanized with vertical seams. Bracing, airshaft, and curb cap are aluminum or galvanized throughout. A 1/2" bird screen is standard and is mounted across the intake/discharge area of the hood.

› Curbs

Roof curbs are available in a variety of sizes. Galvanized steel unibeam curbs are the most popular. For a complete listing of all curb types and sizes available, please consult the latest PennBarry Curb brochure.

› Gravity Ventilator

PennBarry Airette Gravity Ventilators are available in a square hood, stepped-curb cap design. The design compliments the silhouette of any building, providing the performance, size selection, and economical advantages required from virtually any design specification.

Gravity ventilators are constructed of heavy gauge aluminum or galvanized steel. Hood, throat, and curb cap are .064" thick, and all internal bracing consists of 1.25" x 1.25" x .125" steel or aluminum angles. All hoods are mechanically fastened to the throat for easy removal. Curb bases are constructed so that the curb base is 5.5" wider than the throat size.

› Gravity Ventilator

Model: AEG

- Standard throat sizes up to 72" x 72"

Options & Accessories

- Hinged hoods on throat sizes up to 60"
- Hood insulation/anti-condensate in fiberglass
- Washable filters
- Extended throats
- Throat access panels
- Backdraft and control dampers
- Insect or snow screen
- Assorted finish coatings

Selection Criteria

› Pressure Drop

PennBarry Gravity Ventilator performance is presented as CFM at a pressure drop; NOT static pressure, which is normally shown. The airflow (CFM) shown includes the total pressure drop through the ventilator. The Total Pressure includes both Static and Velocity Pressure.

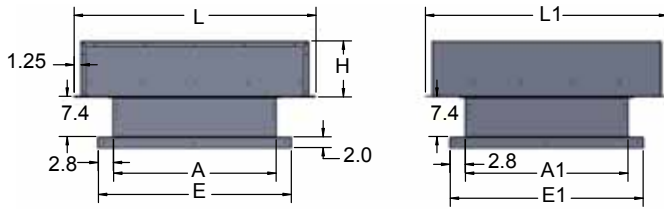
Static Pressure = Total Pressure – Velocity Pressure.

1. Total Pressure is equal to the Pressure Drop found in the performance tables.
2. Velocity Pressure = (Throat Velocity ÷ 4005)². Throat Velocity is found in the performance tables, or can be calculated (CFM at design ÷ Throat Area in sq. ft.).

Example:

1. 8000 CFM ÷ by 9 sq. ft. (Derived from A x A1 = 36" x 36") = 889 ft. per minute Throat Velocity
2. 889 ft. per minute ÷ by 4005 = .221 (which when squared = .05" Velocity Pressure).
3. .085" Total Pressure minus .05" Velocity Pressure = .035" Static Pressure.

› AEG (Relief) Dimensional Data



› AEG (Relief) Dimensional and Performance Data

Throat Area	Throat Size (A x A')	Curb Cap (E x E')	Hood Size (L x L')		Hood Height	Throat Velocity (FPM)										
						300	400	500	600	700	800	900	1000	1100	1200	
						Pressure Drop (in. wg.)										
						0.016	0.025	0.033	0.046	0.063	0.084	0.11	0.139	0.172	0.207	
1.0	12x12	17.5 17.5	20.5 20.5	5	300	400	500	600	700	800	900	1000	1100	1200		
1.2	12x14	17.5 19.5	20.5 22.5	6	350	467	583	700	817	933	1050	1167	1283	1400		
1.3	12x16	17.5 21.5	20.5 24.5	6	400	533	667	800	933	1067	1200	1333	1467	1600		
1.5	12x18	17.5 23.5	20.5 32.5	6	450	600	750	900	1050	1200	1350	1500	1650	1800		
2.0	12x24	17.5 29.5	20.5 38.5	6	600	800	1000	1200	1400	1600	1800	2000	2200	2400		
2.5	12x30	17.5 35.5	20.5 44.5	7	750	1000	1250	1500	1750	2000	2250	2500	2750	3000		
3.0	12x36	17.5 41.5	20.5 56.5	7	900	1200	1500	1800	2100	2400	2700	3000	3300	3600		
3.5	12x42	17.5 47.5	20.5 62.5	7	1050	1400	1750	2100	2450	2800	3150	3500	3850	4200		
4.0	12x48	17.5 53.5	20.5 74.5	7	1200	1600	2000	2400	2800	3200	3600	4000	4400	4800		
4.5	12x54	17.5 59.5	20.5 80.5	7	1350	1800	2250	2700	3150	3600	4050	4500	4950	5400		
5.0	12x60	17.5 65.5	20.5 86.5	7	1500	2000	2500	3000	3500	4000	4500	5000	5500	6000		
5.5	12x66	17.5 71.5	20.5 98.5	8	1650	2200	2750	3300	3850	4400	4950	5500	6050	6600		
6.0	12x72	17.5 77.5	20.5 104.5	8	1800	2400	3000	3600	4200	4800	5400	6000	6600	7200		
1.4	14x14	19.5 19.5	22.5 22.5	6	408	544	681	817	953	1089	1225	1361	1497	1633		
1.8	14x18	19.5 23.5	22.5 32.5	6	525	700	875	1050	1225	1400	1575	1750	1925	2100		
2.3	14x24	19.5 29.5	22.5 38.5	7	700	933	1167	1400	1633	1867	2100	2333	2567	2800		
2.9	14x30	19.5 35.5	22.5 44.5	7	875	1167	1458	1750	2042	2333	2625	2917	3208	3500		
3.5	14x36	19.5 41.5	22.5 56.5	8	1050	1400	1750	2100	2450	2800	3150	3500	3850	4200		
4.1	14x42	19.5 47.5	22.5 62.5	8	1225	1633	2042	2450	2858	3267	3675	4083	4492	4900		
4.7	14x48	19.5 53.5	22.5 74.5	8	1400	1867	2333	2800	3267	3733	4200	4667	5133	5600		
5.3	14x54	19.5 59.5	22.5 80.5	8	1575	2100	2625	3150	3675	4200	4725	5250	5775	6300		
5.8	14x60	19.5 65.5	22.5 86.5	8	1750	2333	2917	3500	4083	4667	5250	5833	6417	7000		
6.4	14x66	19.5 71.5	22.5 98.5	8	1925	2567	3208	3850	4492	5133	5775	6417	7058	7700		
7.0	14x72	19.5 77.5	22.5 104.5	8	2100	2800	3500	4200	4900	5600	6300	7000	7700	8400		
1.8	16x16	21.5 21.5	30.5 24.5	6	533	711	889	1067	1244	1422	1600	1778	1956	2133		
2.0	16x18	21.5 23.5	30.5 32.5	7	600	800	1000	1200	1400	1600	1800	2000	2200	2400		
2.7	16x24	21.5 29.5	30.5 38.5	7	800	1067	1333	1600	1867	2133	2400	2667	2933	3200		
3.3	16x30	21.5 35.5	30.5 44.5	8	1000	1333	1667	2000	2333	2667	3000	3333	3667	4000		
4.0	16x36	21.5 41.5	30.5 56.5	8	1200	1600	2000	2400	2800	3200	3600	4000	4400	4800		
4.7	16x42	21.5 47.5	30.5 62.5	8	1400	1867	2333	2800	3267	3733	4200	4667	5133	5600		
5.3	16x48	21.5 53.5	30.5 74.5	8	1600	2133	2667	3200	3733	4267	4800	5333	5867	6400		
6.0	16x54	21.5 59.5	30.5 80.5	9	1800	2400	3000	3600	4200	4800	5400	6000	6600	7200		
6.7	16x60	21.5 65.5	30.5 86.5	9	2000	2667	3333	4000	4667	5333	6000	6667	7333	8000		
7.3	16x66	21.5 71.5	30.5 98.5	9	2200	2933	3667	4400	5133	5867	6600	7333	8067	8800		
8.0	16x72	21.5 77.5	30.5 104.5	9	2400	3200	4000	4800	5600	6400	7200	8000	8800	9600		
2.3	18x18	23.5 23.5	32.5 32.5	7	675	900	1125	1350	1575	1800	2025	2250	2475	2700		
3.0	18x24	23.5 29.5	32.5 38.5	8	900	1200	1500	1800	2100	2400	2700	3000	3300	3600		
3.8	18x30	23.5 35.5	32.5 44.5	8	1125	1500	1875	2250	2625	3000	3375	3750	4125	4500		
4.5	18x36	23.5 41.5	32.5 56.5	8	1350	1800	2250	2700	3150	3600	4050	4500	4950	5400		
5.3	18x42	23.5 47.5	32.5 62.5	9	1575	2100	2625	3150	3675	4200	4725	5250	5775	6300		
6.0	18x48	23.5 53.5	32.5 74.5	9	1800	2400	3000	3600	4200	4800	5400	6000	6600	7200		
6.8	18x54	23.5 59.5	32.5 80.5	9	2025	2700	3375	4050	4725	5400	6075	6750	7425	8100		
7.5	18x60	23.5 65.5	32.5 86.5	9	2250	3000	3750	4500	5250	6000	6750	7500	8250	9000		
8.3	18x66	23.5 71.5	32.5 98.5	10	2475	3300	4125	4950	5775	6600	7425	8250	9075	9900		
9.0	18x72	23.5 77.5	32.5 104.5	10	2700	3600	4500	5400	6300	7200	8100	9000	9900	10800		
2.8	20x20	25.5 25.5	34.5 34.5	7	833	1111	1389	1667	1944	2222	2500	2778	3056	3333		
3.3	20x24	25.5 29.5	34.5 38.5	8	1000	1333	1667	2000	2333	2667	3000	3333	3667	4000		
4.2	20x30	25.5 35.5	34.5 44.5	8	1250	1667	2083	2500	2917	3333	3750	4167	4583	5000		
5.0	20x36	25.5 41.5	34.5 56.5	9	1500	2000	2500	3000	3500	4000	4500	5000	5500	6000		

 ©PennBarry 2011
 Dimensions in inches.

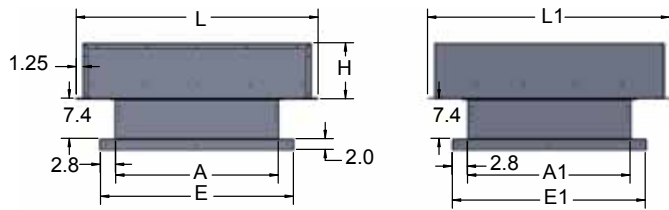
Dimensional Information & Performance Data

Airette Gravity Ventilator | Relief



AEG

› AEG (Relief) Dimensional Data



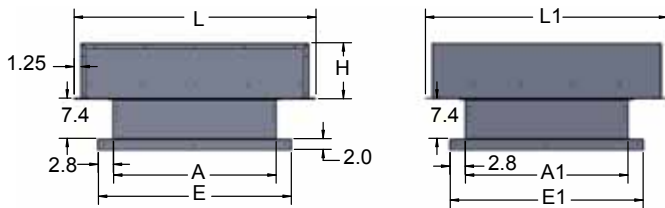
› AEG (Relief) Dimensional and Performance Data

Throat Area	Throat Size (A x A')	Curb Cap (E x E')		Hood Size (L x L')		Hood Height	Throat Velocity (FPM)											
							300	400	500	600	700	800	900	1000	1100	1200		
							Pressure Drop (in. wg.)											
5.8	20x42	25.5	47.5	34.5	62.5	9	0.016	0.025	0.033	0.046	0.063	0.084	0.11	0.139	0.172	0.207		
6.7	20x48	25.5	53.5	34.5	74.5	10	1750	2333	2917	3500	4083	4667	5250	5833	6417	7000		
7.5	20x54	25.5	59.5	34.5	80.5	10	2000	2667	3333	4000	4667	5333	6000	6667	7333	8000		
8.3	20x60	25.5	65.5	34.5	86.5	10	2250	3000	3750	4500	5250	6000	6750	7500	8333	9167		
9.2	20x66	25.5	71.5	34.5	98.5	10	2500	3333	4167	5000	5833	6667	7500	8333	9167	10000		
10.0	20x72	25.5	77.5	34.5	104.5	10	2750	3667	4583	5500	6417	7333	8250	9167	10083	11000		
4.0	24x24	29.5	29.5	38.5	38.5	8	3000	4000	5000	6000	7000	8000	9000	10000	11000	12000		
5.0	24x30	29.5	35.5	38.5	44.5	9	1200	1600	2000	2400	2800	3200	3600	4000	4400	4800		
6.0	24x36	29.5	41.5	38.5	56.5	10	1500	2000	2500	3000	3500	4000	4500	5000	5500	6000		
7.0	24x42	29.5	47.5	38.5	62.5	10	1800	2400	3000	3600	4200	4800	5400	6000	6600	7200		
8.0	24x48	29.5	53.5	38.5	74.5	10	2100	2800	3500	4200	4900	5600	6300	7000	7700	8400		
9.0	24x54	29.5	59.5	38.5	80.5	11	2400	3200	4000	4800	5600	6400	7200	8000	8800	9600		
10.0	24x60	29.5	65.5	38.5	86.5	11	2700	3600	4500	5400	6300	7200	8100	9000	9900	10800		
11.0	24x66	29.5	71.5	38.5	98.5	11	3000	4000	5000	6000	7000	8000	9000	10000	11000	12000		
12.0	24x72	29.5	77.5	38.5	104.5	11	3300	4400	5500	6600	7700	8800	9900	11000	12100	13200		
6.3	30x30	35.5	35.5	44.5	44.5	10	3600	4800	6000	7200	8400	9600	10800	12000	13200	14400		
7.5	30x36	35.5	41.5	44.5	56.5	11	1875	2500	3125	3750	4375	5000	5625	6250	6875	7500		
8.8	30x42	35.5	47.5	44.5	62.5	11	2250	3000	3750	4500	5250	6000	6750	7500	8250	9000		
10.0	30x48	35.5	53.5	44.5	74.5	12	2625	3500	4375	5250	6125	7000	7875	8750	9625	10500		
11.3	30x54	35.5	59.5	44.5	80.5	12	3000	4000	5000	6000	7000	8000	9000	10000	11000	12000		
12.5	30x60	35.5	65.5	44.5	86.5	12	3375	4500	5625	6750	7875	9000	10125	11250	12375	13500		
13.8	30x66	35.5	71.5	44.5	98.5	13	3750	5000	6250	7500	8750	10000	11250	12500	13750	15000		
15.0	30x72	35.5	77.5	44.5	104.5	13	4125	5500	6875	8250	9625	11000	12375	13750	15125	16500		
9.0	36x36	41.5	41.5	56.5	56.5	11	4500	6000	7500	9000	10500	12000	13500	15000	16500	18000		
10.5	36x42	41.5	47.5	56.5	62.5	12	2700	3600	4500	5400	6300	7200	8100	9000	9900	10800		
12.0	36x48	41.5	53.5	56.5	74.5	13	3150	4200	5250	6300	7350	8400	9450	10500	11550	12600		
13.5	36x54	41.5	59.5	56.5	80.5	13	3600	4800	6000	7200	8400	9600	10800	12000	13200	14400		
15.0	36x60	41.5	65.5	56.5	86.5	14	4050	5400	6750	8100	9450	10800	12150	13500	14850	16200		
16.5	36x66	41.5	71.5	56.5	98.5	14	4500	6000	7500	9000	10500	12000	13500	15000	16500	18000		
18.0	36x72	41.5	77.5	56.5	104.5	14	4950	6600	8250	9900	11550	13200	14850	16500	18150	19800		
12.3	42x42	47.5	47.5	62.5	62.5	13	5400	7200	9000	10800	12600	14400	16200	18000	19800	21600		
14.0	42x48	47.5	53.5	62.5	74.5	14	3675	4900	6125	7350	8575	9800	11025	12250	13475	14700		
15.8	42x54	47.5	59.5	62.5	80.5	14	4200	5600	7000	8400	9800	11200	12600	14000	15400	16800		
17.5	42x60	47.5	65.5	62.5	86.5	15	4725	6300	7875	9450	11025	12600	14175	15750	17325	18900		
19.3	42x66	47.5	71.5	62.5	98.5	15	5250	7000	8750	10500	12250	14000	15750	17500	19250	21000		
21.0	42x72	47.5	77.5	62.5	104.5	16	5775	7700	9625	11550	13475	15400	17325	19250	21175	23100		
16.0	48x48	53.5	53.5	74.5	74.5	14	6300	8400	10500	12600	14700	16800	18900	21000	23100	25200		
18.0	48x54	53.5	59.5	74.5	80.5	15	4800	6400	8000	9600	11200	12800	14400	16000	17600	19200		
20.0	48x60	53.5	65.5	74.5	86.5	16	5400	7200	9000	10800	12600	14400	16200	18000	19800	21600		
22.0	48x66	53.5	71.5	74.5	98.5	16	6000	8000	10000	12000	14000	16000	18000	20000	22000	24000		
24.0	48x72	53.5	77.5	74.5	104.5	17	6600	8800	11000	13200	15400	17600	19800	22000	24200	26400		
20.3	54x54	59.5	59.5	80.5	80.5	16	7200	9600	12000	14400	16800	19200	21600	24000	26400	28800		
22.5	54x60	59.5	65.5	80.5	86.5	17	6075	8100	10125	12150	14175	16200	18225	20250	22275	24300		
24.8	54x66	59.5	71.5	80.5	98.5	17	6750	9000	11250	13500	15750	18000	20250	22500	24750	27000		
27.0	54x72	59.5	77.5	80.5	104.5	18	7425	9900	12375	14850	17325	19800	22275	24750	27225	29700		
25.0	60x60	65.5	65.5	86.5	86.5	17	8100	10800	13500	16200	18900	21600	24300	27000	29700	32400		
27.5	60x66	65.5	71.5	86.5	98.5	18	7500	10000	12500	15000	17500	20000	22500	25000	27500	30000		
30.0	60x72	65.5	77.5	86.5	104.5	19	8250	11000	13750	16500	19250	22000	24750	27500	30250	33000		
36.0	72x72	77.5	77.5	104.5	104.5	20	9000	12000	15000	18000	21000	24000	27000	30000	33000	36000		
						20	10800	14400	18000	21600	25200	28800	32400	36000	39600	43200		

Dimensions in inches.

©PennBarry 2011

› AEG (Intake) Dimensional Data



› AEG (Intake) Dimensional and Performance Data

Throat Area	Throat Size (A x A')	Curb Cap (E x E')	Hood Size (L x L')		Hood Height	Throat Velocity (FPM)										
						300	400	500	600	700	800	900	1000	1100	1200	
						Pressure Drop (in. wg.)										
						0.016	0.025	0.033	0.046	0.063	0.084	0.11	0.139	0.172	0.207	
1.0	12x12	17.5 17.5	26.5 26.5	8	300	400	500	600	700	800	900	1000	1100	1200		
1.2	12x14	17.5 19.5	26.5 28.5	8	350	467	583	700	817	933	1050	1167	1283	1400		
1.3	12x16	17.5 21.5	26.5 30.5	8	400	533	667	800	933	1067	1200	1333	1467	1600		
1.5	12x18	17.5 23.5	26.5 32.5	8	450	600	750	900	1050	1200	1350	1500	1650	1800		
2.0	12x24	17.5 29.5	26.5 38.5	8	600	800	1000	1200	1400	1600	1800	2000	2200	2400		
2.5	12x30	17.5 35.5	34.5 44.5	10	750	1000	1250	1500	1750	2000	2250	2500	2750	3000		
3.0	12x36	17.5 41.5	34.5 50.5	10	900	1200	1500	1800	2100	2400	2700	3000	3300	3600		
3.5	12x42	17.5 47.5	34.5 56.5	10	1050	1400	1750	2100	2450	2800	3150	3500	3850	4200		
4.0	12x48	17.5 53.5	34.5 62.5	10	1200	1600	2000	2400	2800	3200	3600	4000	4400	4800		
4.5	12x54	17.5 59.5	34.5 68.5	10	1350	1800	2250	2700	3150	3600	4050	4500	4950	5400		
5.0	12x60	17.5 65.5	34.5 74.5	9	1500	2000	2500	3000	3500	4000	4500	5000	5500	6000		
5.5	12x66	17.5 71.5	38.5 80.5	11	1650	2200	2750	3300	3850	4400	4950	5500	6050	6600		
6.0	12x72	17.5 77.5	38.5 86.5	11	1800	2400	3000	3600	4200	4800	5400	6000	6600	7200		
1.4	14x14	19.5 19.5	32.5 28.5	9	408	544	681	817	953	1089	1225	1361	1497	1633		
1.8	14x18	19.5 23.5	32.5 32.5	9	525	700	875	1050	1225	1400	1575	1750	1925	2100		
2.3	14x24	19.5 29.5	32.5 38.5	9	700	933	1167	1400	1633	1867	2100	2333	2567	2800		
2.9	14x30	19.5 35.5	32.5 44.5	9	875	1167	1458	1750	2042	2333	2625	2917	3208	3500		
3.5	14x36	19.5 41.5	32.5 58.5	10	1050	1400	1750	2100	2450	2800	3150	3500	3850	4200		
4.1	14x42	19.5 47.5	32.5 64.5	10	1225	1633	2042	2450	2858	3267	3675	4083	4492	4900		
4.7	14x48	19.5 53.5	32.5 70.5	9	1400	1867	2333	2800	3267	3733	4200	4667	5133	5600		
5.3	14x54	19.5 59.5	32.5 80.5	10	1575	2100	2625	3150	3675	4200	4725	5250	5775	6300		
5.8	14x60	19.5 65.5	32.5 86.5	10	1750	2333	2917	3500	4083	4667	5250	5833	6417	7000		
6.4	14x66	19.5 71.5	32.5 98.5	10	1925	2567	3208	3850	4492	5133	5775	6417	7058	7700		
7.0	14x72	19.5 77.5	32.5 104.5	10	2100	2800	3500	4200	4900	5600	6300	7000	7700	8400		
1.8	16x16	21.5 21.5	34.5 30.5	9	533	711	889	1067	1244	1422	1600	1778	1956	2133		
2.0	16x18	21.5 23.5	38.5 32.5	10	600	800	1000	1200	1400	1600	1800	2000	2200	2400		
2.7	16x24	21.5 29.5	38.5 38.5	10	800	1067	1333	1600	1867	2133	2400	2667	2933	3200		
3.3	16x30	21.5 35.5	38.5 44.5	10	1000	1333	1667	2000	2333	2667	3000	3333	3667	4000		
4.0	16x36	21.5 41.5	38.5 50.5	10	1200	1600	2000	2400	2800	3200	3600	4000	4400	4800		
4.7	16x42	21.5 47.5	38.5 60.5	10	1400	1867	2333	2800	3267	3733	4200	4667	5133	5600		
5.3	16x48	21.5 53.5	38.5 66.5	10	1600	2133	2667	3200	3733	4267	4800	5333	5867	6400		
6.0	16x54	21.5 59.5	38.5 76.5	11	1800	2400	3000	3600	4200	4800	5400	6000	6600	7200		
6.7	16x60	21.5 65.5	38.5 82.5	10	2000	2667	3333	4000	4667	5333	6000	6667	7333	8000		
7.3	16x66	21.5 71.5	38.5 92.5	11	2200	2933	3667	4400	5133	5867	6600	7333	8067	8800		
8.0	16x72	21.5 77.5	38.5 98.5	11	2400	3200	4000	4800	5600	6400	7200	8000	8800	9600		
2.3	18x18	23.5 23.5	32.5 36.5	9	675	900	1125	1350	1575	1800	2025	2250	2475	2700		
3.0	18x24	23.5 29.5	44.5 38.5	11	900	1200	1500	1800	2100	2400	2700	3000	3300	3600		
3.8	18x30	23.5 35.5	44.5 44.5	11	1125	1500	1875	2250	2625	3000	3375	3750	4125	4500		
4.5	18x36	23.5 41.5	44.5 50.5	11	1350	1800	2250	2700	3150	3600	4050	4500	4950	5400		
5.3	18x42	23.5 47.5	44.5 56.5	10	1575	2100	2625	3150	3675	4200	4725	5250	5775	6300		
6.0	18x48	23.5 53.5	44.5 66.5	11	1800	2400	3000	3600	4200	4800	5400	6000	6600	7200		
6.8	18x54	23.5 59.5	44.5 72.5	11	2025	2700	3375	4050	4725	5400	6075	6750	7425	8100		
7.5	18x60	23.5 65.5	44.5 86.5	12	2250	3000	3750	4500	5250	6000	6750	7500	8250	9000		
8.3	18x66	23.5 71.5	44.5 92.5	12	2475	3300	4125	4950	5775	6600	7425	8250	9075	9900		
9.0	18x72	23.5 77.5	44.5 98.5	12	2700	3600	4500	5400	6300	7200	8100	9000	9900	10800		
2.8	20x20	25.5 25.5	42.5 42.5	12	833	1111	1389	1667	1944	2222	2500	2778	3056	3333		
3.3	20x24	25.5 29.5	42.5 46.5	12	1000	1333	1667	2000	2333	2667	3000	3333	3667	4000		
4.2	20x30	25.5 35.5	42.5 52.5	11	1250	1667	2083	2500	2917	3333	3750	4167	4583	5000		
5.0	20x36	25.5 41.5	42.5 58.5	11	1500	2000	2500	3000	3500	4000	4500	5000	5500	6000		

Dimensions in inches.

©PennBarry 2011

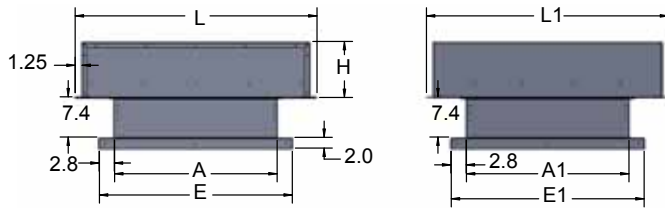
Dimensional Information & Performance Data



Airette Gravity Ventilator | Intake

AEG

> AEG (Intake) Dimensional Data



> AEG (Intake) Dimensional and Performance Data

Throat Area	Throat Size (A x A')	Curb Cap (E x E')		Hood Size (L x L')		Hood Height	Throat Velocity (FPM)											
							300	400	500	600	700	800	900	1000	1100	1200		
							Pressure Drop (in. wg.)											
5.8	20x42	25.5	47.5	46.5	64.5	12	0.016	0.025	0.033	0.046	0.063	0.084	0.11	0.139	0.172	0.207		
6.7	20x48	25.5	53.5	46.5	70.5	12	1750	2333	2917	3500	4083	4667	5250	5833	6417	7000		
7.5	20x54	25.5	59.5	46.5	76.5	12	2250	3000	3750	4500	5250	6000	6750	7500	8250	9000		
8.3	20x60	25.5	65.5	52.5	82.5	14	2500	3333	4167	5000	5833	6667	7500	8333	9167	10000		
9.2	20x66	25.5	71.5	52.5	88.5	13	2750	3667	4583	5500	6417	7333	8250	9167	10083	11000		
10.0	20x72	25.5	77.5	52.5	94.5	13	3000	4000	5000	6000	7000	8000	9000	10000	11000	12000		
4.0	24x24	29.5	29.5	50.5	50.5	14	1200	1600	2000	2400	2800	3200	3600	4000	4400	4800		
5.0	24x30	29.5	35.5	50.5	56.5	13	1500	2000	2500	3000	3500	4000	4500	5000	5500	6000		
6.0	24x36	29.5	41.5	50.5	62.5	13	1800	2400	3000	3600	4200	4800	5400	6000	6600	7200		
7.0	24x42	29.5	47.5	50.5	68.5	13	2100	2800	3500	4200	4900	5600	6300	7000	7700	8400		
8.0	24x48	29.5	53.5	50.5	74.5	13	2400	3200	4000	4800	5600	6400	7200	8000	8800	9600		
9.0	24x54	29.5	59.5	56.5	80.5	14	2700	3600	4500	5400	6300	7200	8100	9000	9900	10800		
10.0	24x60	29.5	65.5	56.5	86.5	14	3000	4000	5000	6000	7000	8000	9000	10000	11000	12000		
11.0	24x66	29.5	71.5	56.5	92.5	14	3300	4400	5500	6600	7700	8800	9900	11000	12100	13200		
12.0	24x72	29.5	77.5	56.5	98.5	14	3600	4800	6000	7200	8400	9600	10800	12000	13200	14400		
6.3	30x30	35.5	35.5	56.5	56.5	13	1875	2500	3125	3750	4375	5000	5625	6250	6875	7500		
7.5	30x36	35.5	41.5	56.5	62.5	13	2250	3000	3750	4500	5250	6000	6750	7500	8250	9000		
8.8	30x42	35.5	47.5	56.5	68.5	15	2625	3500	4375	5250	6125	7000	7875	8750	9625	10500		
10.0	30x48	35.5	53.5	56.5	74.5	15	3000	4000	5000	6000	7000	8000	9000	10000	11000	12000		
11.3	30x54	35.5	59.5	56.5	80.5	15	3375	4500	5625	6750	7875	9000	10125	11250	12375	13500		
12.5	30x60	35.5	65.5	56.5	86.5	15	3750	5000	6250	7500	8750	10000	11250	12500	13750	15000		
13.8	30x66	35.5	71.5	56.5	92.5	16	4125	5500	6875	8250	9625	11000	12375	13750	15125	16500		
15.0	30x72	35.5	77.5	56.5	98.5	16	4500	6000	7500	9000	10500	12000	13500	15000	16500	18000		
9.0	36x36	41.5	41.5	62.5	68.5	14	2700	3600	4500	5400	6300	7200	8100	9000	9900	10800		
10.5	36x42	41.5	47.5	68.5	74.5	16	3150	4200	5250	6300	7350	8400	9450	10500	11550	12600		
12.0	36x48	41.5	53.5	68.5	80.5	17	3600	4800	6000	7200	8400	9600	10800	12000	13200	14400		
13.5	36x54	41.5	59.5	68.5	86.5	17	4050	5400	6750	8100	9450	10800	12150	13500	14850	16200		
15.0	36x60	41.5	65.5	68.5	92.5	17	4500	6000	7500	9000	10500	12000	13500	15000	16500	18000		
16.5	36x66	41.5	71.5	68.5	98.5	18	4950	6600	8250	9900	11550	13200	14850	16500	18150	19800		
18.0	36x72	41.5	77.5	68.5	104.5	18	5400	7200	9000	10800	12600	14400	16200	18000	19800	21600		
12.3	42x42	47.5	47.5	74.5	74.5	20	3675	4900	6125	7350	8575	9800	11025	12250	13475	14700		
14.0	42x48	47.5	53.5	74.5	78.5	20	4200	5600	7000	8400	9800	11200	12600	14000	15400	16800		
15.8	42x54	47.5	59.5	74.5	82.5	19	4725	6300	7875	9450	11025	12600	14175	15750	17325	18900		
17.5	42x60	47.5	65.5	74.5	86.5	19	5250	7000	8750	10500	12250	14000	15750	17500	19250	21000		
19.3	42x66	47.5	71.5	74.5	90.5	18	5775	7700	9625	11550	13475	15400	17325	19250	21175	23100		
21.0	42x72	47.5	77.5	74.5	94.5	20	6300	8400	10500	12600	14700	16800	18900	21000	23100	25200		
16.0	48x48	53.5	53.5	74.5	78.5	18	4800	6400	8000	9600	11200	12800	14400	16000	17600	19200		
18.0	48x54	53.5	59.5	74.5	82.5	20	5400	7200	9000	10800	12600	14400	16200	18000	19800	21600		
20.0	48x60	53.5	65.5	74.5	86.5	19	6000	8000	10000	12000	14000	16000	18000	20000	22000	24000		
22.0	48x66	53.5	71.5	86.5	90.5	23	6600	8800	11000	13200	15400	17600	19800	22000	24200	26400		
24.0	48x72	53.5	77.5	86.5	94.5	23	7200	9600	12000	14400	16800	19200	21600	24000	26400	28800		
20.3	54x54	59.5	59.5	86.5	86.5	22	6075	8100	10125	12150	14175	16200	18225	20250	22275	24300		
22.5	54x60	59.5	65.5	86.5	90.5	21	6750	9000	11250	13500	15750	18000	20250	22500	24750	27000		
24.8	54x66	59.5	71.5	86.5	94.5	21	7425	9900	12375	14850	17325	19800	22275	24750	27225	29700		
27.0	54x72	59.5	77.5	104.5	104.5	23	8100	10800	13500	16200	18900	21600	24300	27000	29700	32400		
25.0	60x60	65.5	65.5	110.5	110.5	24	7500	10000	12500	15000	17500	20000	22500	25000	27500	30000		
27.5	60x66	65.5	71.5	110.5	116.5	23	8250	11000	13750	16500	19250	22000	24750	27500	30250	33000		
30.0	60x72	65.5	77.5	110.5	122.5	23	9000	12000	15000	18000	21000	24000	27000	30000	33000	36000		
36.0	72x72	77.5	77.5	122.5	134.5	26	10800	14400	18000	21600	25200	28800	32400	36000	39600	43200		

Dimensions in inches.

©PennBarry 2011

› Model

AEG = Airette Gravity Ventilator

› Application

R = Relief

I = Intake

› Unit Material

A = Aluminum

G = Galvanized

› Filters

0 = None

A = 1" Aluminum Filters

C = 2" Aluminum Filters

› Screen

B = Galvanized Bird Screen

I = Aluminum Insect Screen

S = Insect/Bird Screen

L = Aluminum Bird Screen

› Insulated Hood

0 = None

A = 1" Fiberglass

X = Special

› Throat Access

0 = None

H = Hinged Hood (60" Max)

› Paint / Coating

0 = None

F = Epoxy Powder Coat*

G = Epoxy Powder Coat w/ UV*

N = Polyester Powder Coat

*Not available with choice of color.

› Color

0 = None

50 = Chrome Green

53 = Williamsburg Blue

55 = Pale Green

56 = Dove Gray

61 = White

63 = Oxford Beige

65 = Dover White

66 = Desert Tan

70 = Black

73 = Smoke Gray

77 = Brick Red

79 = Peppercorn

81 = Pale Brown

83 = Chocolate Brown

85 = Timeless Bronze

94 = Charcoal

X = Special

› Damper

0 = None

BDD = Gravity Backdraft Damper

CBD = Counter Balance Relief Damper

MD1 = Motor Operated Damper 115V

MD2 = Motor Operated Damper 230V

MD4 = Motor Operated Damper 460V

X = Special

› Roof Curb

0 = None K = UCA18 Y = URA18

A = UCG8 L = UG12 1 = URG12

B = UCG12 N = SFG12 2 = URG18

C = UCG18 P = SFG18 X = Special

D = UCA8 T = UA12

E = UCA12 U = UA18

F = SFA12 V = UG18

G = SFA18 W = URA12

› Slope

0 = None

S = Single

D = Double

› Slope Side

0 = None

S = Short

L = Long

› Metal Liner

0 = None

L = Metal Liner

› Damper Holding Plate

0 = None

P = Damper Holding Plate

› Neoprene Gasket

0 = None

G = Gasket

› No Wooden Nailer

0 = Wood Nailer

N = No Wooden Nailer

› Curb Paint/Coating

0 = None

B = Air Dried Epoxy

Q = Air Dried Enamel

X = Special

› AEG

Hooded Gravity Rooftop exhaust (relief) or supply (fresh air) ventilator shall be Airette Gravity AEG, supplied by Penn-Barry, 605 Shiloh Road, Plano, TX 75074.

Constructed of heavy gauge aluminum or galvanized throughout, hood roof is "cross braked" for water run off, and hood is sized to provide 100% or 200% Free Area (depending on application). Hood is braced to support 30lb snow load. Hood is provided with aluminum or galvanized bird screen, or optionally 1" washable (with some size limitations) filters.

Hood and throat joints are riveted and caulked. Internal bracing is riveted. Hood is mechanically fastened to throat for ease of removal. When properly guyed, unit will withstand 60 mph wind load.

Sales Agreement

Airette Gravity Ventilator



1-Year Limited Manufacturer Warranty

› Products Covered

PennBarry Fans and Ventilators (each, a “PennBarry Product”)

› One Year Limited Warranty For PennBarry Products

PennBarry warrants to the original commercial purchaser that the PennBarry Products will be free from defects in material and workmanship for a period of one (1) year from the date of shipment.

› Exclusive Remedy

PennBarry will, at its option, repair or replace (without removal or installation) the affected components of any defective PennBarry Product; repair or replace (without removal or installation) the entire defective PennBarry Product; or refund the invoice price of the PennBarry Product. In all cases, a reasonable time period must be allowed for warranty repairs to be completed.

› What You Must Do

In order to make a claim under these warranties:

- You must be the original commercial purchaser of the PennBarry Product.
- You must promptly notify us, within the warranty period, of any defect and provide us with any substantiation that we may reasonably request.
- The PennBarry Product must have been installed and maintained in accordance with good industry practice and any specific PennBarry recommendations.

› Exclusions

These warranties do not cover defects caused by:

- Improper design or operation of the system into which the PennBarry Product is incorporated.
- Improper installation.
- Accident, abuse or misuse.
- Unreasonable use (including any use for non-commercial purposes, failure to provide reasonable and necessary maintenance as specified by PennBarry, misapplication and operation in excess of stated performance characteristics).
- Components not manufactured by PennBarry.

› Limitations

- In all cases, PennBarry reserves the right to fully satisfy its obligations under the Limited Warranties by refunding the invoice price of the defective PennBarry Product (or, if the PennBarry Product has been discontinued, of the most nearly comparable current product).
- PennBarry reserves the right to furnish a substitute or replacement component or product in the event a PennBarry Product or any component of the product is discontinued or otherwise unavailable.
- PennBarry’s only obligation with respect to components not manufactured by PennBarry shall be to pass through the warranty made by the manufacturer of the defective component.

› General

The foregoing warranties are exclusive and in lieu of all other warranties except that of title, whether written, oral or implied, in fact or in law (including any warranty of merchantability or fitness for a particular purpose).

PennBarry hereby disclaims any liability for special, punitive, indirect, incidental or consequential damages, including without limitation lost profits or revenues, loss of use of equipment, cost of capital, cost of substitute products, facilities or services, downtime, shutdown or slowdown costs.

The remedies of the original commercial purchaser set forth herein are exclusive and the liability of PennBarry with respect to the PennBarry Products, whether in contract, tort, warranty, strict liability or other legal theory shall not exceed the invoice price charged by PennBarry to its customer for the affected PennBarry Product at the time the claim is made.

Inquiries regarding these warranties should be sent to: PennBarry, 1401 North Plano Road, Richardson, TX 75081

Other PennBarry Products

Centrifugal Products



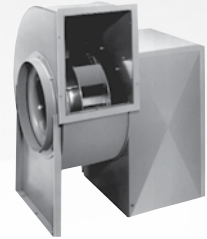
› **Domex**
Centrifugal
Roof Exhausters



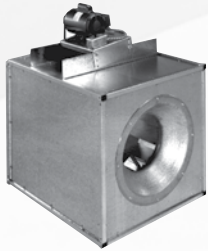
› **Fumex**
Kitchen Hood Centrifugal
Roof Exhausters



› **Zephyr**
Ceiling and Inline Fans



› **Dynamo**
Centrifugal Blowers



› **Centrex Inliner**
Centrifugal Inline Fan



› **LC Dynafan**
Low Contour Centrifugal
Roof Exhausters

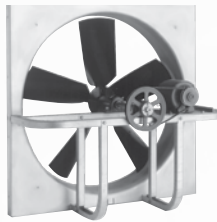


› **ESI**
Efficient Silent
Inline Fan



› **Fume Exhaust**
Curb Mounted
Centrifugal Fans

Axial | Gravity Products



› **Breezeway**
Propeller Wall Fan



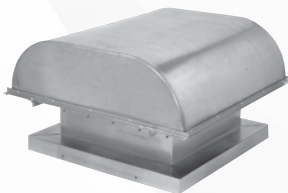
› **Hi-Ex**
Power Roof Ventilator



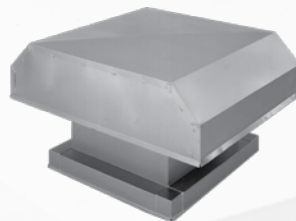
› **Tubeaxial**
Inline Fans



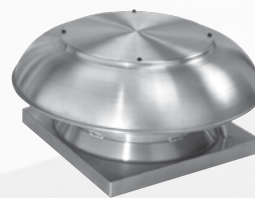
› **Vaneaxial**
Inline Fans



› **Powered Airette**
Axial Roof Ventilators



› **Airette**
Gravity Intake/Relief Hood



› **Domex Axial**
Axial Roof Ventilators



› **Axcentrix**
Bifurcator Fan



PENNBARRY

For more information, contact your local PennBarry Sales Representative or visit us at www.PennBarry.com.

©2011 PennBarry™ All Rights Reserved.