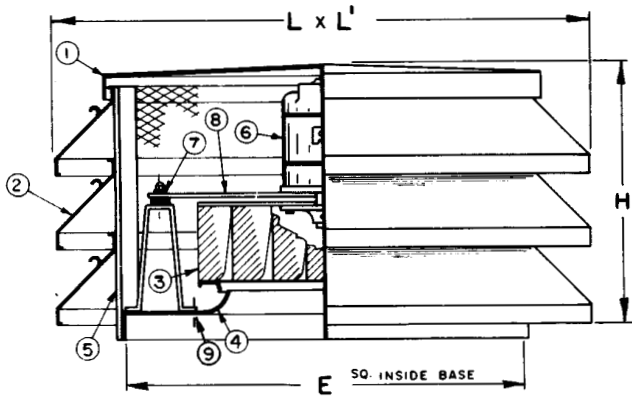
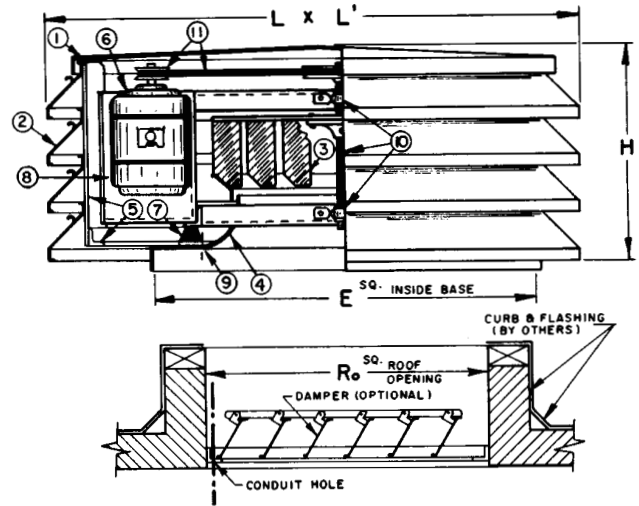


# Linea

## Direct Drive



## Belt Drive



## Legend

- |                                    |  |
|------------------------------------|--|
| 1. Formed Aluminum Roof            | 6. Electric Motor                            |
| 2. Extruded Aluminum Blades        | 7. Anti-Vibration Mounts                     |
| 3. Centrifugal Fan Wheel           | 8. Motor Support Plate                       |
| 4. Spun Inlet Venturi              | 9. Conduit Hole                              |
| 5. Galvanized Steel Support Angles | 10. Fan Shaft and Bearings (Belt Drive Only) |
|                                    | 11. Belt and Pulleys (Belt Drive Only)       |

## Dimensional Data

	Direct Drive		Belt Drive				
	LF06VC, SC, RC	LF12VC, SC, RC	LF12BC	LF20BC	LF24BC	LF30BC	LF40BC
L X L'	27 X 29	29 X 31	33 X 45	37 X 49	42 X 60 1/2	45 X 63	53 X 79
H	15	20	19	23	23	27 1/2	31 1/2
E† SQ.	18 1/2	20 1/2	24 1/2	28 1/2	33 1/2	36	44 1/2
Ro SQ.	9	11 1/2	16 1/4	20	25	28	36

† Outside dimension of curb should be 1 1/2" less than 'E' dimension.

All dimensions are in inches.

**Material:** Aluminum Housing



PENNBARRY™

1401 North Plano Road, Richardson, TX 75081  
Ph: 972.234.3202 Fax: 972.497.0468  
www.PennBarry.com

## Submittal Sheet

### Linea

### Aluminum Louvered Centrifugal Roof Exhausters Direct and Belt Drive

This drawing illustrates our understanding of order requirements. When approved, it represents details for fabrication, as such, PennBarry will not be responsible for revisions in the field or other changes after release for fabrication. Published and protected by PennBarry, Richardson, TX. All rights reserved. May not be reproduced partially or in full without permission from the publisher. No rights conveyed to manufacture partially or in full, use or sell either the method of construction represented or any invention in any way related thereto.

**Form ES-LF1**  
Revised March 2005